

PflM1

NarI Pml1

SapI KasI BspM1 BseY1

EarI Eco57 Blp1

```

GACCAACAAGATGAAGAGCACCAAAGGCGCCCTGACCTTCAGCCCCTACCTGCTGAGCCACGTGATGGGCTACGGCTTCTACCACTTCGGCACCTACCCC
801 |||||*|||||*|||||*|||||*|||||*|||||*|||||*|||||*|||||*|||||*|||||*|||||*|||||*|||||*|||||*|||||*|||||* 900
CTGGTTGTTCTACTTCTCGTGGTTTCCGCGGGACTGGAAGTCGGGGATGGACGACTCGGTGCACTACCCGATGCCGAAGATGGTGAAGCCGTGGATGGGG
TurboGFP > T N K M K S T K G A L T F S P Y L L S H V M G Y G F Y H F G T Y P
    
```

Bsg1

SpAcc Xmn1 Bsg1 Eco57 Pml1

```

AGCGGCTACGAGAACCCCTTCTGCACGCCATCAACAACGGCGGCTACACCAACACCCGCATCGAGAAGTACGAGGACGGCGGCGTGTCTGCACGTGAGCT
901 |||||*|||||*|||||*|||||*|||||*|||||*|||||*|||||*|||||*|||||*|||||*|||||*|||||*|||||*|||||*|||||*|||||* 1000
TCGCCGATGCTCTTGGGGAAGGACGTGCGGTAGTTGTTGCCGCCGATGTGGTTGTGGGCGTAGCTCTTCATGCTCCTGCCGCCGCACGACGTGCACTCGA
TurboGFP > S G Y E N P F L H A I N N G G Y T N T R I E K Y E D G G V L H V S F
    
```

FseI

NaeI EagI

NgoM4

```

TCAGCTACCGCTACGAGGCCGGCCGCGTGATCGGCGACTTCAAGGTGATGGGCACCCGCTTCCCCGAGGACAGCGTGATCTTCACCGACAAGATCATCCG
1001 |||||*|||||*|||||*|||||*|||||*|||||*|||||*|||||*|||||*|||||*|||||*|||||*|||||*|||||*|||||*|||||*|||||* 1100
AGTCGATGGCGATGCTCCGGCCGGCGCACTAGCCGCTGAAGTTCCACTACCCGTGGCCGAAGGGGCTCCTGTGCGCACTAGAAGTGGCTGTTCTAGTAGGC
TurboGFP > S Y R Y E A G R V I G D F K V M G T G F P E D S V I F T D K I I R
    
```

NcoI

BspM1 AarI

BsaB1 Eco57 BsaXb

Bsg1

```

CAGCAACGCCACCGTGGAGCACCTGCACCCCATGGGCGATAACGATCTGGATGGCAGCTTCACCCGCACCTTCAGCCTGCGCGACGGCGGCTACTACAGC
1101 |||||*|||||*|||||*|||||*|||||*|||||*|||||*|||||*|||||*|||||*|||||*|||||*|||||*|||||*|||||*|||||*|||||* 1200
GTCGTTGCGGTGGCACCTCGTGGACGTGGGGTACCCGCTATTGCTAGACCTACCGTCAAGTGGGCGTGAAGTCGGACGCGCTGCCGCCGATGATGTGCG
TurboGFP > S N A T V E H L H P M G D N D L D G S F T R T F S L R D G G Y Y S
    
```

```

                                     Eci1
                                     Apal
                                     Pst1  PspOM
                                     BseY1
                                     BsaXa
1201  TCCGTGGTGGACAGCCACATGCACTTCAAGAGCGCCATCCACCCCAGCATCCTGCAGAACGGGGGCCCCATGTTTCGCCCTTCCGCCGCGTGGAGGAGGATC
      |||||||*|||||||*|||||||*|||||||*|||||||*|||||||*|||||||*|||||||*|||||||*|||||||*|||||||* 1300
      AGGCACCACCTGTCGGTGTACGTGAAGTTCTCGCGGTAGGTGGGGTTCGTAGGACGTCTTGCCCCGGGGTACAAGCGGAAGGCGGCGCACCTCCTCCTAG
TurboGFP  > S V V D S H M H F K S A I H P S I L Q N G G P M F A F R R V E E D H

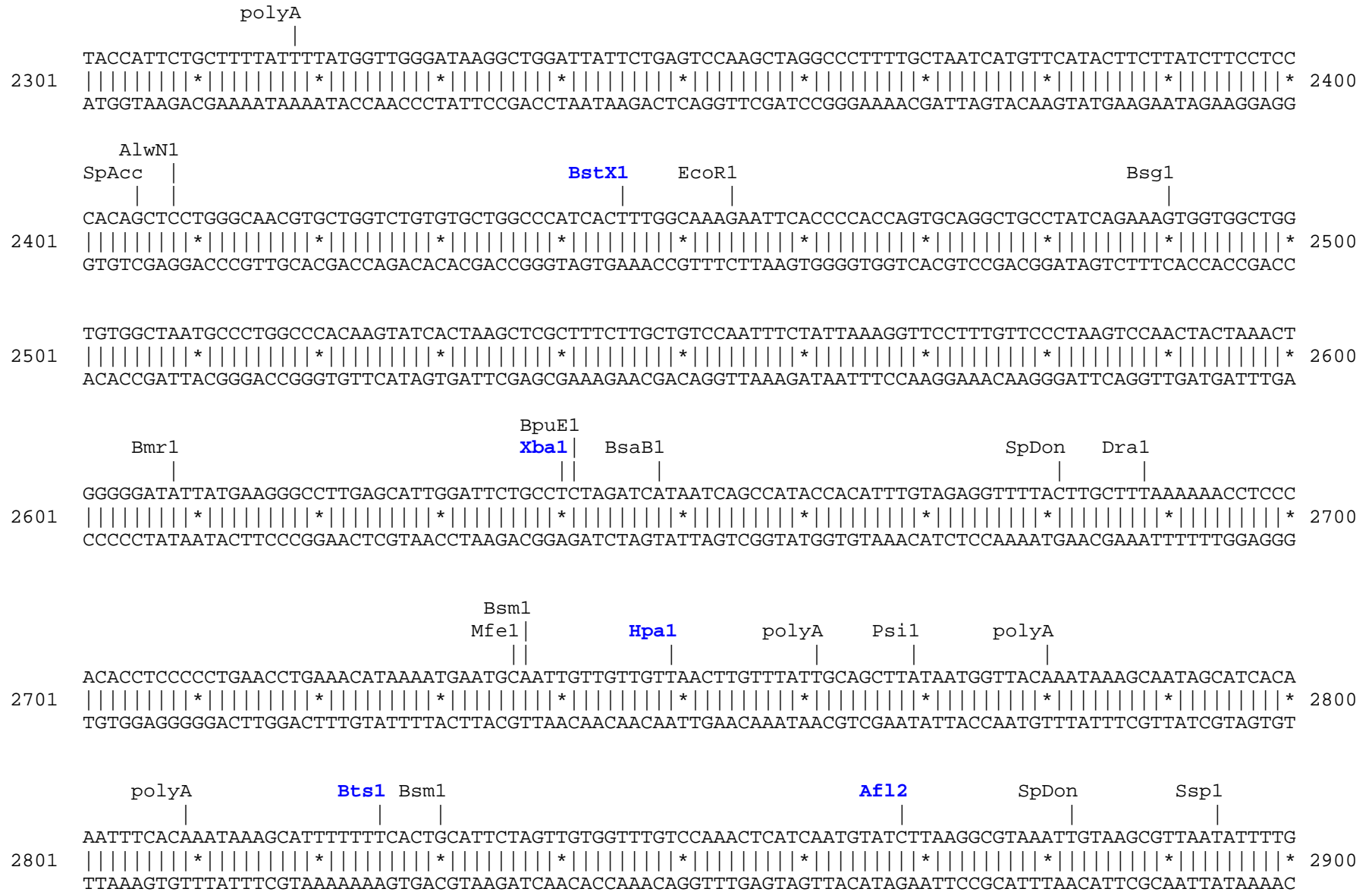
                                     Xho1
                                     Bgl2  EcoRV  Nco1
                                     BseR1  BseY1
1301  ACAGCAACACCCGAGCTGGGCATCGTGGAGTACCAGCACGCCTTCAAGACCCCGGATGCAGATGCCGGTGAAGAAAGATCTCGAGATATCAGCCATGGCTT
      |||||||*|||||||*|||||||*|||||||*|||||||*|||||||*|||||||*|||||||*|||||||*|||||||* 1400
      TGTCGTTGTGGCTCGACCCGTAGCACCTCATGGTCGTGCGGAAGTTCTGGGGCCTACGTCTACGGCCACTTCTTTCTAGAGCTCTATAGTCGGTACCGAA
TurboGFP/MODC> S N T E L G I V E Y Q H A F K T P D A D A G E E R S R D I S H G F

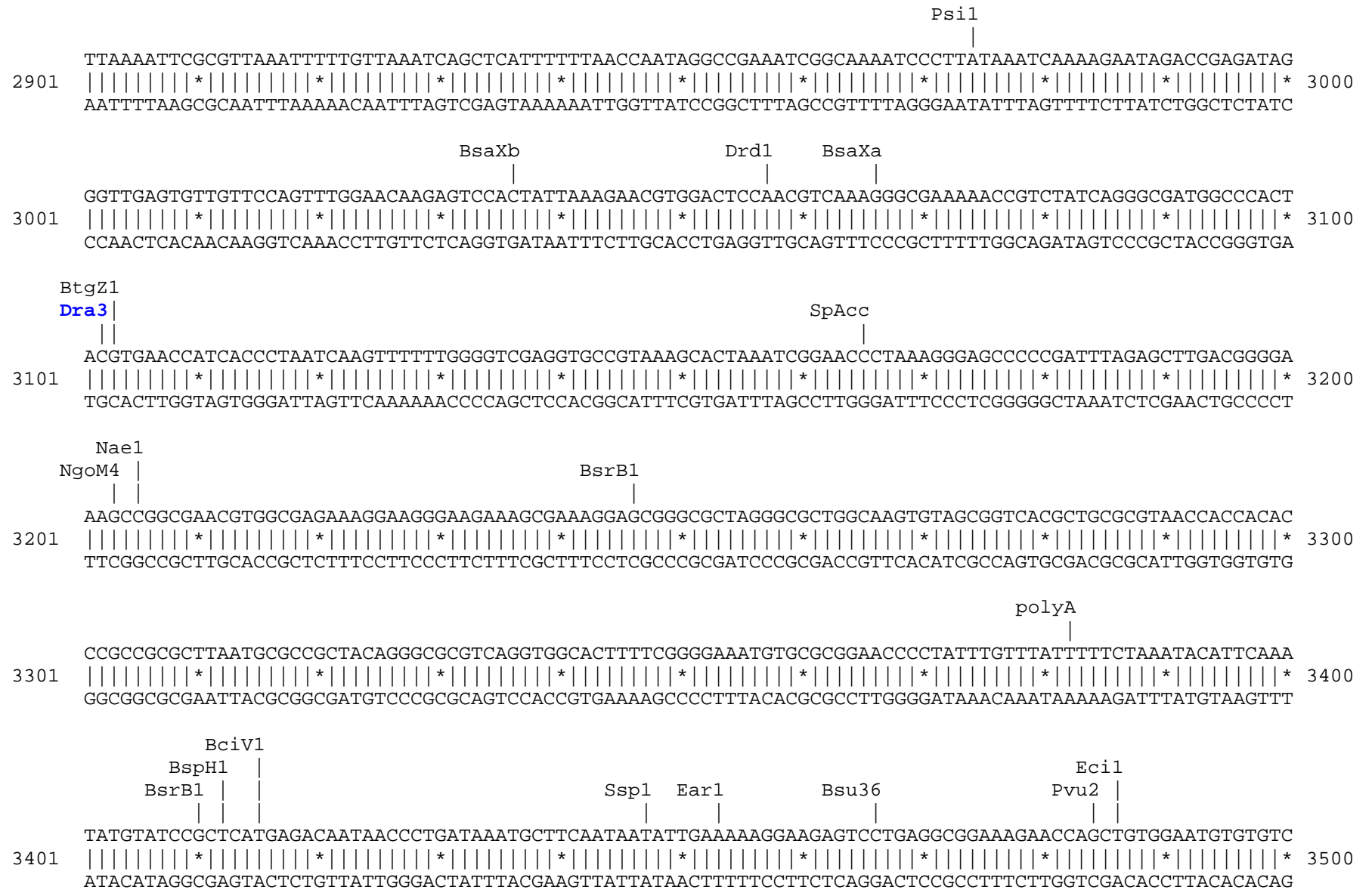
                                     NaeI
SgrA1 |
NcoM4 |
                                     BsrB1
1401  CCCGCCGGCGGTGGCGGCGCAGGATGATGGCACGCTGCCCATGTCTTGTGCCAGGAGAGCGGGATGGACCGTCACCCTGCAGCCTGTGCTTCTGCTAGG
      |||||||*|||||||*|||||||*|||||||*|||||||*|||||||*|||||||*|||||||*|||||||*|||||||* 1500
      GGGCGGCCGCCACCGCCGCTCCTACTACCGTGCAGCGGGTACAGAACACGGGTCTCTCGCCCTACCTGGCAGTGGGACGTCCGGACACGAAGACGATCC
MODC      > P P A V A A Q D D G T L P M S C A Q E S G M D R H P A A C A S A R

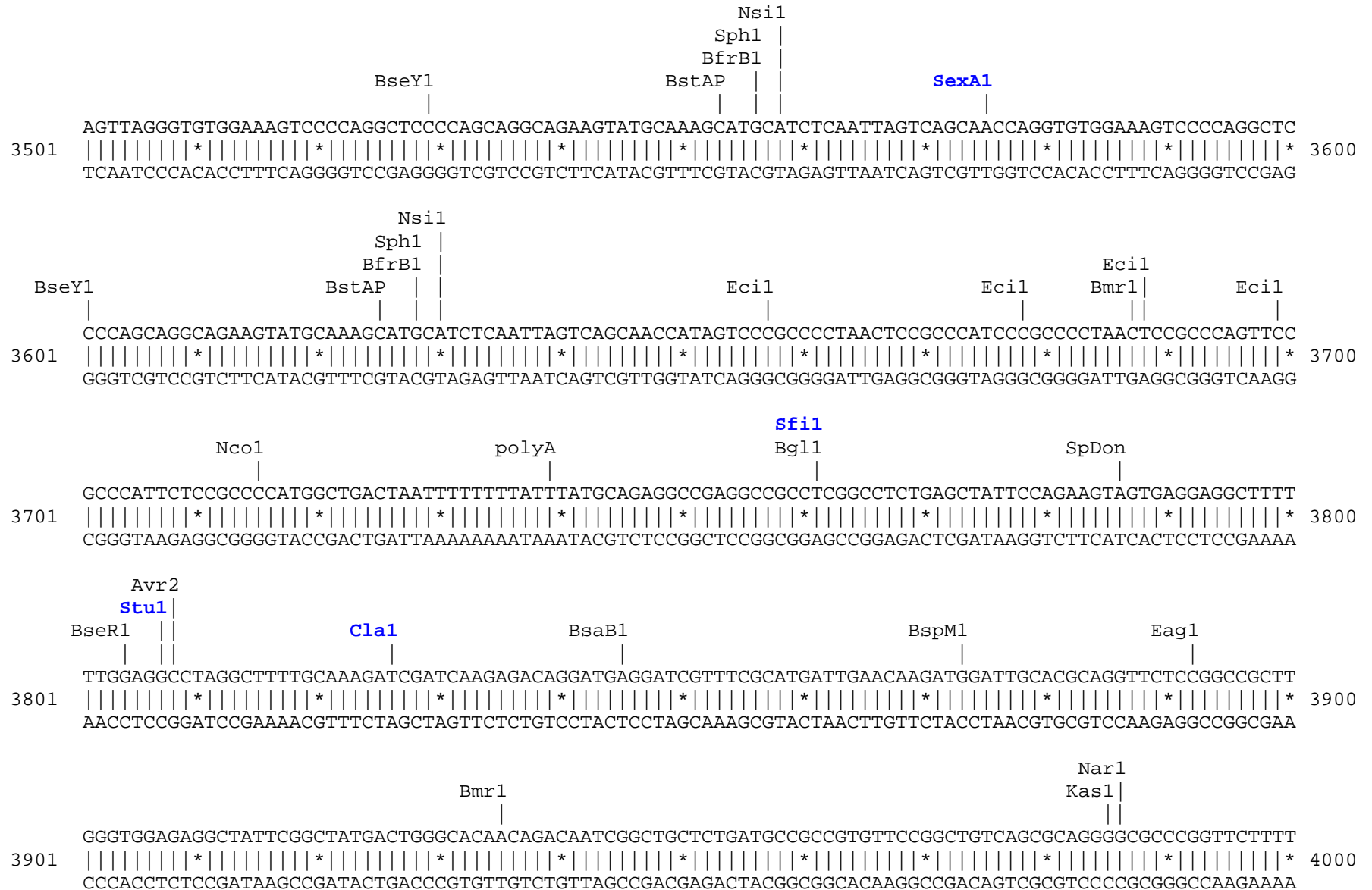
                                     Not1
                                     BamH1
                                     Eag1
                                     Pml1
                                     Bsg1
                                     Eco57
                                     SanD1
1501  ATCAATGTGTAGGCCGGCCGCGTGACAAGCTGCACGTGGATCCTGAGAACTTCAGGGTGAGTCTATGGGACCCTTGATGTTTTCTTTCCCTTCTTTTCTA
      |||||||*|||||||*|||||||*|||||||*|||||||*|||||||*|||||||*|||||||*|||||||*|||||||* 1600
      TAGTTACACATCCGCCGGCGCACTGTTTCGACGTGCACCTAGGACTCTTGAAGTCCCACTCAGATACCCTGGGAACTACAAAAGAAAGGGGAAGAAAAGAT
MODC      > I N V *

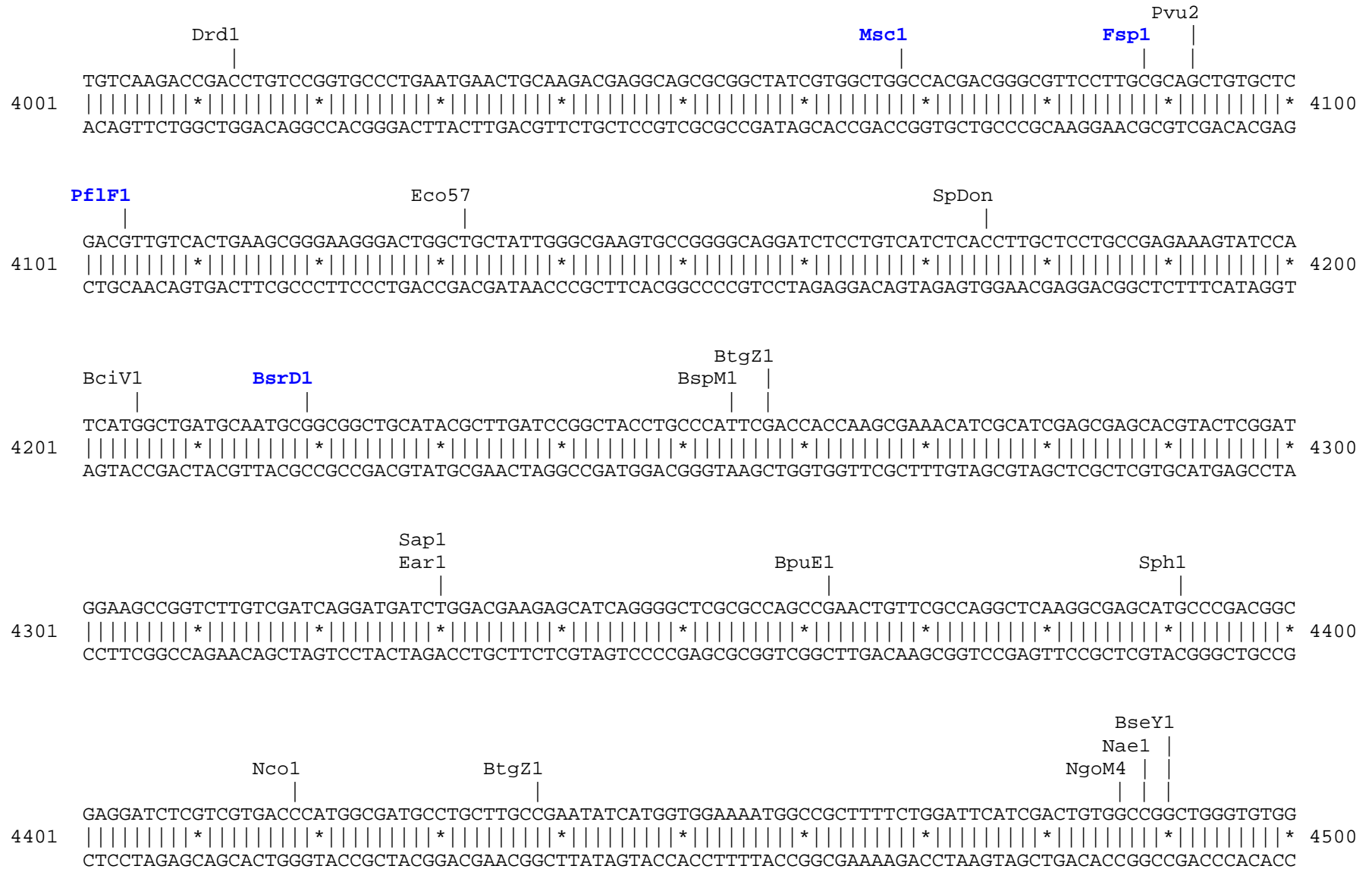
                                     Not1
                                     BamH1
                                     Eag1
                                     Pml1
                                     Bsg1
                                     Eco57
                                     SanD1
1601  TGGTTAAGTTCATGTCATAGGAAGGGGATAAGTAACAGGGTACAGTTTAGAATGGGAAACAGACGAATGATTGCATCAGTGTGGAAGTCTCAGGATCGTT
      |||||||*|||||||*|||||||*|||||||*|||||||*|||||||*|||||||*|||||||*|||||||*|||||||* 1700
      ACCAATCAAGTACAGTATCCTTCCCCTATTCAATTGTCCCATGTCAAATCTTACCCTTTGTCTGCTTACTAACGTAGTCACACCTTCAGAGTCTTAGCAA

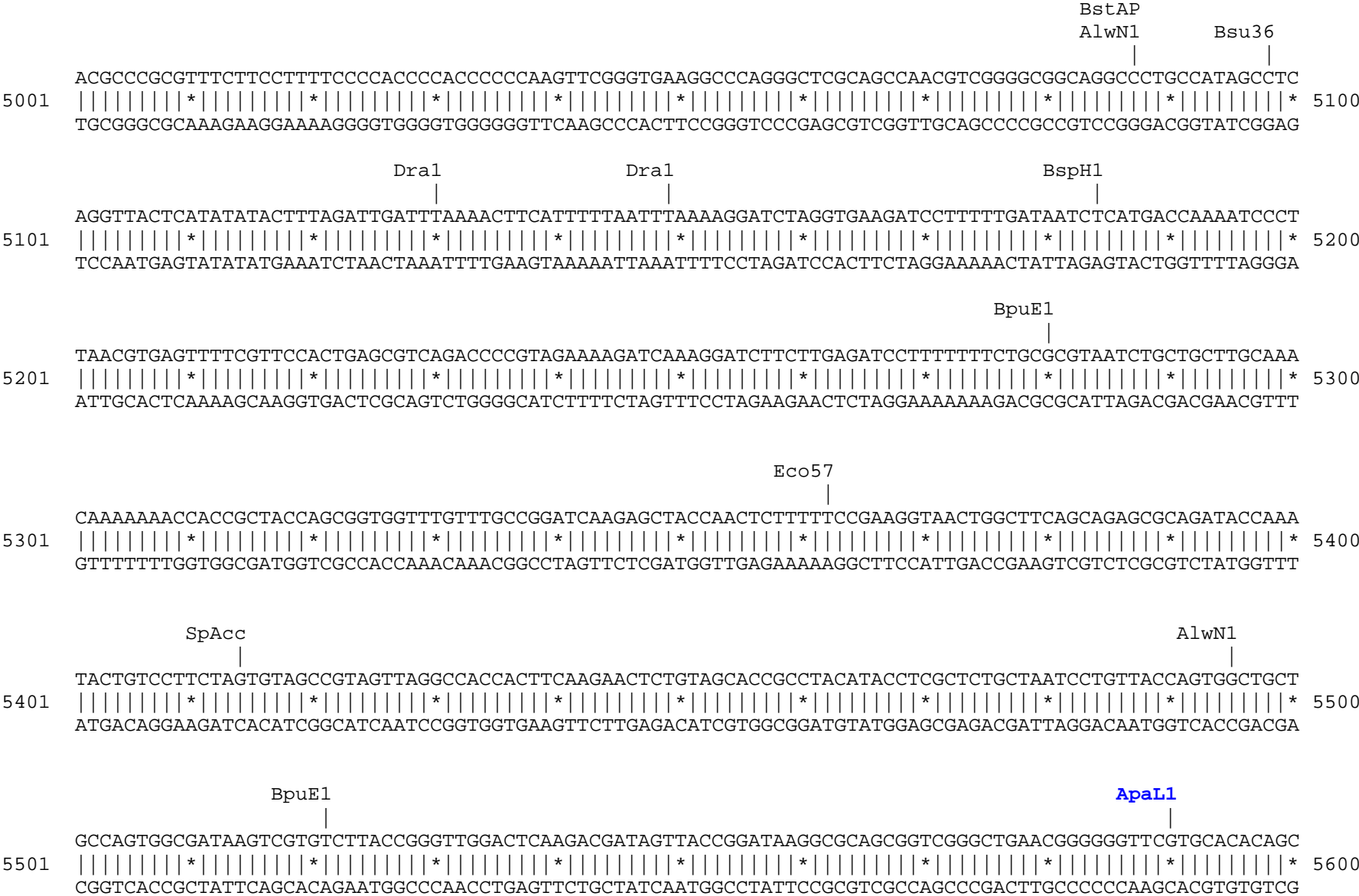
```









Found:

Aar1	Aat2	Acc65	Afe1	Afl2	Age1	AlwN1	Apa1	ApaL1	Ase1	Avr2	BamH1	BciV1	BfrB1
Bgl1	Bgl2	Blp1	Bmr1	Bpm1	BpuE1	Bsa1	BsaB1	BsaXa	BsaXb	BseR1	BseY1	Bsg1	Bsm1
BspH1	BspLU	BspM1	BsrB1	BsrD1	BsrG1	BssS1	BstAP	BstB1	BstX1	Bsu36	BtgZ1	Bts1	_Chi
Clal	Dra1	Dra3	Drd1	Eag1	Ear1	Ecil	Ecl2	Eco57	EcoR1	EcoRV	Fse1	Fsp1	Hind3
Hpa1	Kas1	Kpn1	Mfe1	Msc1	Nae1	Nar1	Nco1	Nde1	NgoM4	Nhe1	Not1	Nsi1	PflF1
PflM1	Pml1	polyA	Psi1	PspOM	Pst1	Pvu2	Rsr2	Sac1	Sac2	Sall1	SanD1	Sap1	SexA1
Sfi1	SgrA1	Sma1	SnaB1	SpAcc	SpDon	Sph1	Ssp1	Stu1	Xba1	Xho1	Xmn1		

Unique:

Aar1	Acc65	Afe1	Afl2	Age1	ApaL1	Ase1	Blp1	Bsa1	BspLU	BsrD1	BsrG1	BstX1	Bts1
_Chi	Clal	Dra3	Ecl2	EcoRV	Fse1	Fsp1	Hind3	Hpa1	Kpn1	Msc1	Nde1	Nhe1	Not1
PflF1	PflM1	Rsr2	Sac1	Sac2	Sall1	SanD1	SexA1	Sfi1	SgrA1	Sma1	SnaB1	Stu1	Xba1
Xmn1													

Not found:

Acl1	Ahd1	Ale1	Asc1	AsiS1	Baela	Baelb	Bbs1	BbvC1	Bcgl1a	Bcgl1b	Bcl1	BmgB1	Bpu10
BsiW1	BsmB1	BspE1	BssH2	BstE2	BstZ1	BxatB	BxatL	BxatR	BxatP	EcoK	EcoN1	FCatB	FCatL
FCatR	FCatP	ScFRT	FspA1	I_Ceu	loxP	Mlu1	Nru1	Pac1	Pme1	PshA1	Pvu1	R4atB	R4atL
R4atP	R4atR	Sbf1	Sca1	Sgf1	Spe1	Srf1	Swa1	T3RNA	T7RNA	T7Ter	PISce	Xcm1	

Excluded by site complexity:

Acc1	Acil	Afl3	Alu1	Alw1	Apo1	Ava1	Ava2	Ban1	Ban2	Bbv1	BceA1	Bfa1	Bme15
BsaA1	BsaH1	BsaJ1	BsaW1	BseM2	BsiE1	BsiH1	Bsl1	BsmA1	BsmF1	Bsp12	BspCa	BspCb	Bsr1
BsrF1	BssK1	BstF5	BstN1	BstU1	BstY1	Btg1	Cac8	CviJ1	Dde1	Eae1	EcoO1	Fau1	Fnu4H
Fok1	Hae2	Hae3	Hga1	Hha1	Hinc2	Hinf1	HinP1	Hpa2	Hph1	Hpy99	Hpy1	Hpy3	HpyC3
HpyC4	HpyC5	Mae3	Mbo2	Mnl1	Mse1	Msl1	MspA1	Mwo1	Nci1	Nla3	Nla4	Nsp1	Ple1
PpuM1	Rsa1	Sau3A	Sau96	SfaN1	Sfc1	Sml1	Sty1	Taq1	Tat1	Tfil	Tse1	Tsp45	Tsp50
TspR1													