

```

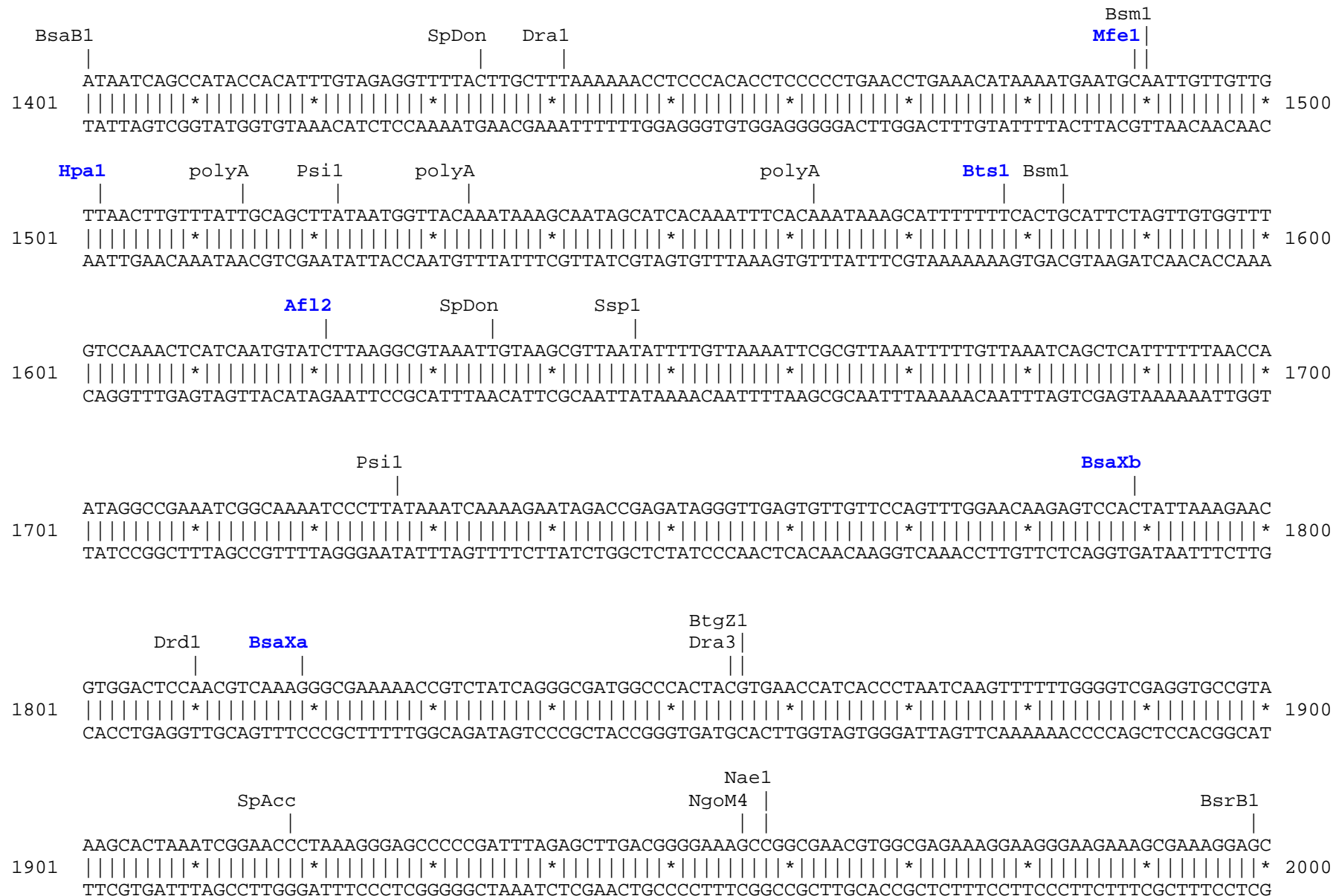
                                     Bsu36      SpDon      Bbs1      Bpm1
GGCATCCCCGACTTCTGGAAGCAGTCCTTCCCTGAGGGCTTCACATGGGAGAGAGTCACCACATACGAAGACGGGGGCGTGCTGACCGCTACCCAGGACA
101  |||||*|||||*|||||*|||||*|||||*|||||*|||||*|||||*|||||*|||||*|||||*|||||*|||||*|||||*|||||* 1000
CCGTAGGGGCTGAAGACCTTCGTCAGGAAGGGACTCCCGAAGTGTACCCTCTCTCAGTGGTGTATGCTTCTGCCCCGCACGACTGGCGATGGGTCTCTGT
PA-TagRFP > G I P D F W K Q S F P E G F T W E R V T T Y E D G G V L T A T Q D T

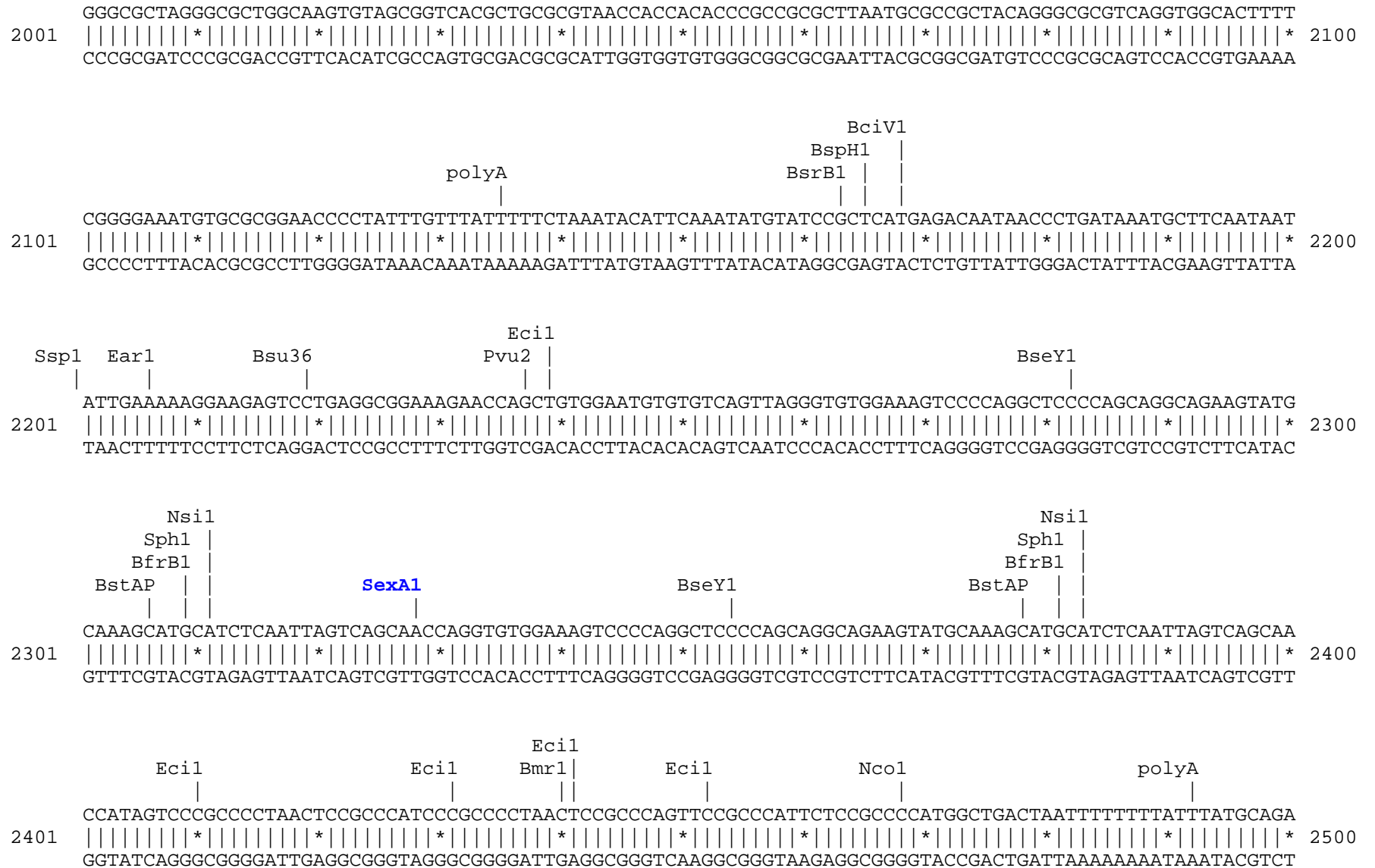
                                     BseY1
CCAGCCTCCAGGACGGCTGCCTCATCTACAACGTCAAGATCAGAGGGGTGAACTTCCCATCCAACGGCCCTGTGATGAAGAAGAAAACACTCGGCTGGGA
1001 |||||*|||||*|||||*|||||*|||||*|||||*|||||*|||||*|||||*|||||*|||||*|||||*|||||*|||||*|||||* 1100
GGTCCGAGGTCTGCGGACGGAGTAGATGTTGCAGTTCTAGTCTCCCCACTTGAAGGGTAGGTTGCCGGGACACTACTTCTTCTTTTGTGAGCCGACCCT
PA-TagRFP > S L Q D G C L I Y N V K I R G V N F P S N G P V M K K K T L G W E

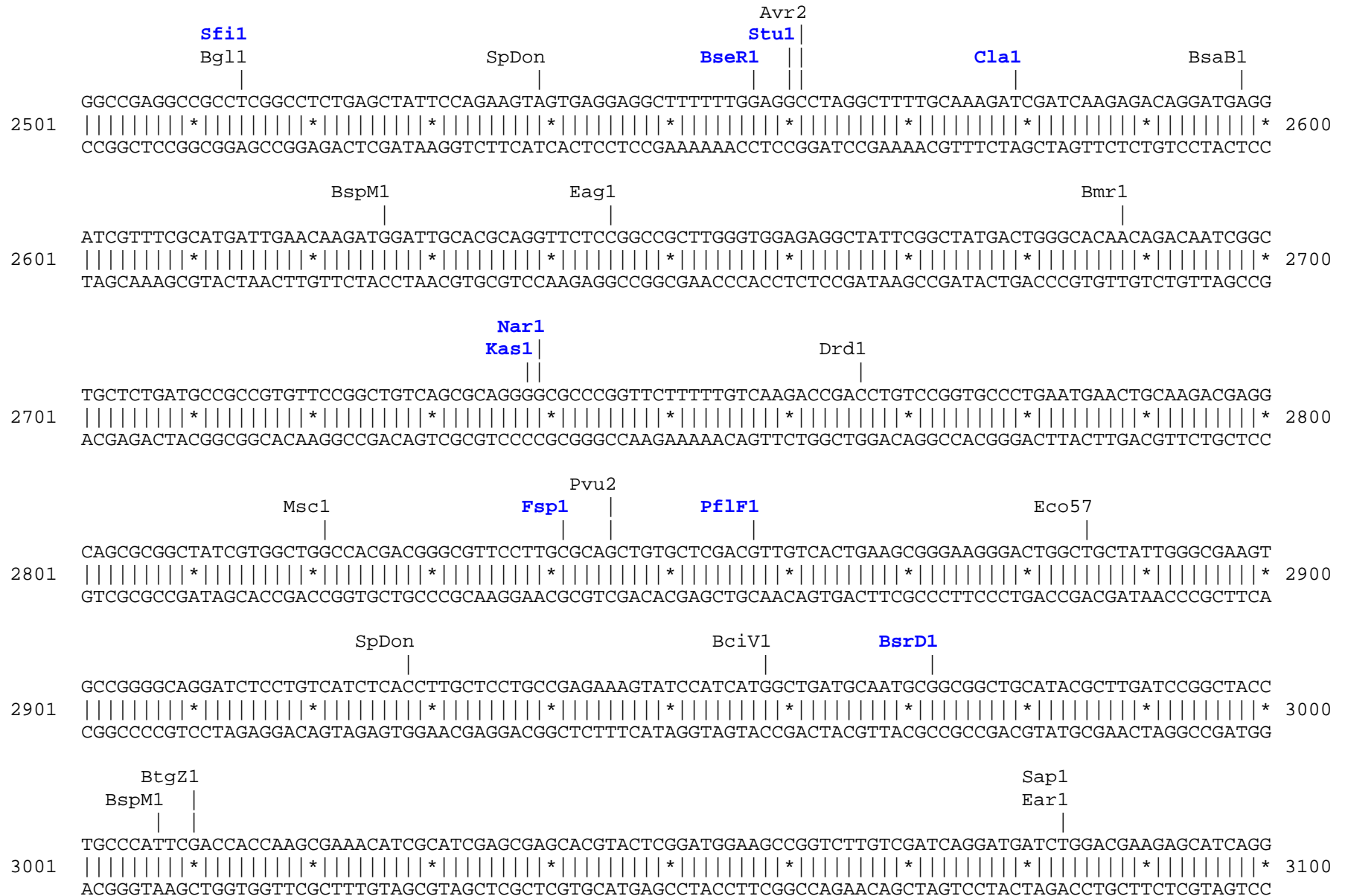
                                     Bgl1      Sall      BssS1      Eco57
ACCGAGCACCGAGAAACTGAAAACCCGCTGACGGCGGCCTGGAAGGCAGGGTTCGACATGGCCCTGAAGCTCGTGGGCGGGGGCCACCTGATCTGCAACTTC
1101 |||||*|||||*|||||*|||||*|||||*|||||*|||||*|||||*|||||*|||||*|||||*|||||*|||||*|||||*|||||* 1200
TGGCTCGTGGCTCTTTGACTTTGGGCGACTGCCGCCGGACCTTCCGTCCCAGCTGTACCGGGACTTCGAGCACCCGCCCGGTGGACTAGACGTTGAAG
PA-TagRFP > P S T E K L K P A D G G L E G R V D M A L K L V G G G H L I C N F

                                     BpuE1      Bsa1
AAGACCACATACAGATCCAAGAAACCCGCTAAGAACCTCAAGATGCCCCGGCGTCTACTATGTGGACCGCAGACTGGAAATCATCAAGGAGGCCGACAAAG
1201 |||||*|||||*|||||*|||||*|||||*|||||*|||||*|||||*|||||*|||||*|||||*|||||*|||||*|||||*|||||* 1300
TTCTGGTGTATGTCTAGGTTCTTTGGGCGATTCTTGGAGTTCTACGGGCCGAGATGATACACCTGGCGTCTGACCTTTAGTAGTTCCTCCGGCTGTTTC
PA-TagRFP > K T T Y R S K K P A K N L K M P G V Y Y V D R R L E I I K E A D K E

                                     BssS1      Hind3      Not1
                                     Bmr1      Dra3      Msc1      SpAcc      Bmr1      Pac1      Eag1      Xba1
AGACCTACTGGGAGCAGCACGAGGTGGCTGTGGCCAGATACTCCGACCTCCCTAGCAAACCTGGGGCACAAGCTTAATTAAGCGGCCGCGACTCTAGATC
1301 |||||*|||||*|||||*|||||*|||||*|||||*|||||*|||||*|||||*|||||*|||||*|||||*|||||*|||||*|||||* 1400
TCTGGATGACCCCTCGTCGTGCTCCACCGACACCGGTCTATGAGGCTGGAGGGATCGTTTGACCCCGTGTTCGAATTAATTTTCGCCGGCGCTGAGATCTAG
PA-TagRFP > T Y W E Q H E V A V A R Y S D L P S K L G H K L N *
```








```

                                polyA      polyA
                                |          |
GGAAGGAGACAATACCGGAAGGAACCCGCGCTATGACGGCAATAAAAAGACAGAATAAAACGCACGGTGTGGGTGCGTTTGTTCATAAACGCGGGGTTTCG
3601 |||||*|||||*|||||*|||||*|||||*|||||*|||||*|||||*|||||*|||||*|||||*|||||*|||||*|||||*|||||* 3700
CCTTCCTCTGTTATGGCCTTCCTTGGGCGCGATACTGCCGTTATTTTTCTGTCTTATTTTTCGCGTCCACAACCCAGCAAACAAGTATTTGCGCCCAAGC

                                Bsa1
                                |
GTCCCAGGGCTGGCACTCTGTTCGATACCCACCGAGACCCCATTTGGGGCCAATACGCCCAGCGTTTCTTCTTTTCCCACCCACCCCAAGTTCGGGT
3701 |||||*|||||*|||||*|||||*|||||*|||||*|||||*|||||*|||||*|||||*|||||*|||||*|||||*|||||*|||||* 3800
CAGGGTCCCGACCGTGAGACAGCTATGGGGTGGCTCTGGGGTAACCCCGGTTATGCGGGCGCAAAGAAGGAAAAGGGGTGGGGTGGGGGTTCAAGCCCA

                                BstAP      AlwN1      Bsu36      Dra1
                                |          |          |          |
GAAGGCCCAAGGGCTCGCAGCCAACGTCGGGGCGGCAGGCCCTGCCATAGCCTCAGGTTACTCATATATACTTTAGATTGATTTAAACTTCATTTTTAAT
3801 |||||*|||||*|||||*|||||*|||||*|||||*|||||*|||||*|||||*|||||*|||||*|||||*|||||*|||||*|||||* 3900
CTTCCGGGTCCCAGCGTCGGTTGCAGCCCCGCCGTCCGGGACGGTATCGGAGTCCAATGAGTATATATGAAATCTAACTAAATTTTGAAGTAAAAATTA

Dra1                                BspH1
|                                  |
TTAAAAGGATCTAGGTGAAGATCCTTTTTTGATAATCTCATGACCAAAATCCCTTAAACGTGAGTTTTTCGTTCCACTGAGCGTCAGACCCCGTAGAAAAGAT
3901 |||||*|||||*|||||*|||||*|||||*|||||*|||||*|||||*|||||*|||||*|||||*|||||*|||||*|||||*|||||* 4000
AATTTTCCTAGATCCACTTCTAGGAAAAACTATTAGAGTACTGGTTTTAGGGAATTGCACTCAAAGCAAGGTGACTCGCAGTCTGGGGCATCTTTTCTA

                                BpuE1
                                |
CAAAGGATCTTCTTGAGATCCTTTTTTTCTGCGCGTAATCTGCTGCTTGCAAACAAAAAAACCACCGCTACCAGCGGTGGTTTGTGTTGCCGGATCAAGAG
4001 |||||*|||||*|||||*|||||*|||||*|||||*|||||*|||||*|||||*|||||*|||||*|||||*|||||*|||||*|||||* 4100
GTTTCCTAGAAGAACTCTAGGAAAAAAGACGCGCATTAGACGACGAACGTTTGTTTTTTTGGTGGCGATGGTGCACCAAAACAAACGGCCTAGTTCTC

                                Eco57      SpAcc
                                |          |
CTACCAACTCTTTTTCCGAAGGTAAGTGGCTTCAGCAGAGCGCAGATACCAAATACTGTCTTCTAGTGTAGCCGTAGTTAGGCCACCACTTCAAGAACT
4101 |||||*|||||*|||||*|||||*|||||*|||||*|||||*|||||*|||||*|||||*|||||*|||||*|||||*|||||*|||||* 4200
GATGGTTGAGAAAAAGGCTTCCATTGACCGAAGTCGTCTCGCGTCTATGGTTTATGACAGGAAGATCACATCGGCATCAATCCGGTGGTGAAGTTCTTGA

```


Found:

Aat2	Acc65	Afe1	Afl2	Age1	AlwN1	Apal	ApaL1	Ase1	Avr2	BamH1	Bbs1	BciV1	BfrB1
Bgl1	Bgl2	Bmr1	Bpm1	BpuE1	Bsa1	BsaB1	BsaXa	BsaXb	BseR1	BseY1	Bsm1	BsrD1	BsrG1
BssS1	BstAP	BstB1	BspH1	BspLU	BspM1	BsrB1	Bsu36	BtgZ1	Bts1	Clal	Dra1	Dra3	Drd1
Eag1	Ear1	Ecil	Ecl2	Eco57	EcoR1	Fsp1	Hind3	Hpa1	Kas1	Kpn1	Mfe1	Msc1	Nae1
Nar1	Nco1	Nde1	NgoM4	Nhe1	Not1	Nsil	Pac1	PflF1	polyA	Psi1	PspOM	Pst1	Pvu2
Rsr2	Sac1	Sac2	Sall	Sap1	SexA1	Sfil	Sma1	SnaB1	SpAcc	SpDon	Sph1	Ssp1	Stu1
Xba1	Xho1												

Unique:

Acc65	Afe1	Afl2	Age1	Apal	Ase1	BamH1	Bbs1	Bgl2	BsaXa	BsaXb	BseR1	BsrD1	BsrG1
BspLU	Bts1	Clal	Ecl2	EcoR1	Fsp1	Hpa1	Kas1	Kpn1	Mfe1	Nar1	Nde1	Nhe1	Not1
Pac1	PflF1	PspOM	Pst1	Rsr2	Sac1	Sac2	SexA1	Sfil	Sma1	SnaB1	Stu1	Xba1	Xho1

Not found:

Aar1	Ac11	Ahd1	Ale1	Asc1	AsiS1	Baela	Baelb	BbvC1	Bcgl1a	Bcgl1b	Bcl1	Blp1	BmgB1
Bpu10	Bsg1	BsiW1	BsmB1	BspE1	BssH2	BstE2	BstX1	BstZ1	BxatB	BxatL	BxatR	BxatP	_Chi
EcoK	EcoN1	EcoRV	FCatB	FCatL	FCatR	FCatP	ScFRT	Fse1	FspA1	I_Ceu	loxP	Mlu1	Nru1
PflM1	Pme1	Pml1	PshA1	Pvu1	R4atB	R4atL	R4atP	R4atR	SanD1	Sbf1	Scal	Sgf1	SgrA1
Spe1	Srf1	Swa1	T3RNA	T7RNA	T7Ter	PISce	Xcm1	Xmn1					

Excluded by site complexity:

Acc1	Acil	Afl3	Alu1	Alw1	Apo1	Ava1	Ava2	Ban1	Ban2	Bbv1	BceA1	Bfa1	Bme15
BsaA1	BsaH1	BsaJ1	BsaW1	BseM2	BsiE1	BsiH1	Bsl1	BsmA1	BsmF1	Bsp12	BspCa	BspCb	BsrF1
BssK1	BstF5	BstN1	BstU1	BstY1	Bsr1	Btg1	Cac8	CviJ1	Dde1	Eae1	EcoO1	Faul	Fnu4H
Fok1	Hae2	Hae3	Hga1	Hha1	Hinc2	Hinf1	HinP1	Hpa2	Hph1	Hpy99	Hpy1	Hpy3	HpyC3
HpyC4	HpyC5	Mae3	Mbo2	Mnl1	Mse1	Msl1	MspA1	Mwo1	Nci1	Nla3	Nla4	Nsp1	Ple1
PpuM1	Rsa1	Sau3A	Sau96	SfaN1	Sfc1	Sml1	Sty1	Taq1	Tat1	Tfi1	Tse1	Tsp45	Tsp50
TspR1													