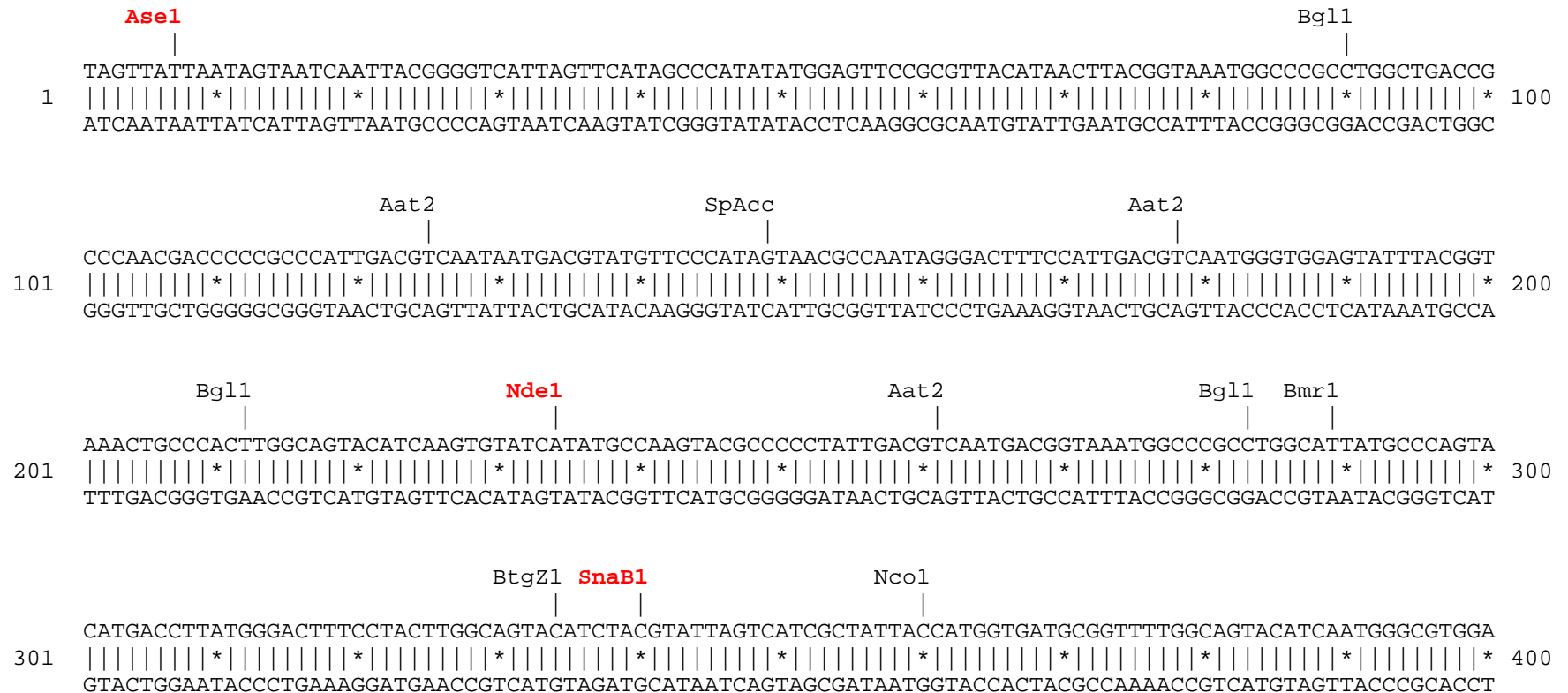


**pTagCFP-keratin** vector restriction map

The data has not been verified by restriction digestion with each enzyme listed and does not take into account possible methylation sites. Enzymes that recognize unambiguous sequences less than 6 base pairs long are not included – for the more complete enzyme list please refer to the Table of restriction sites.

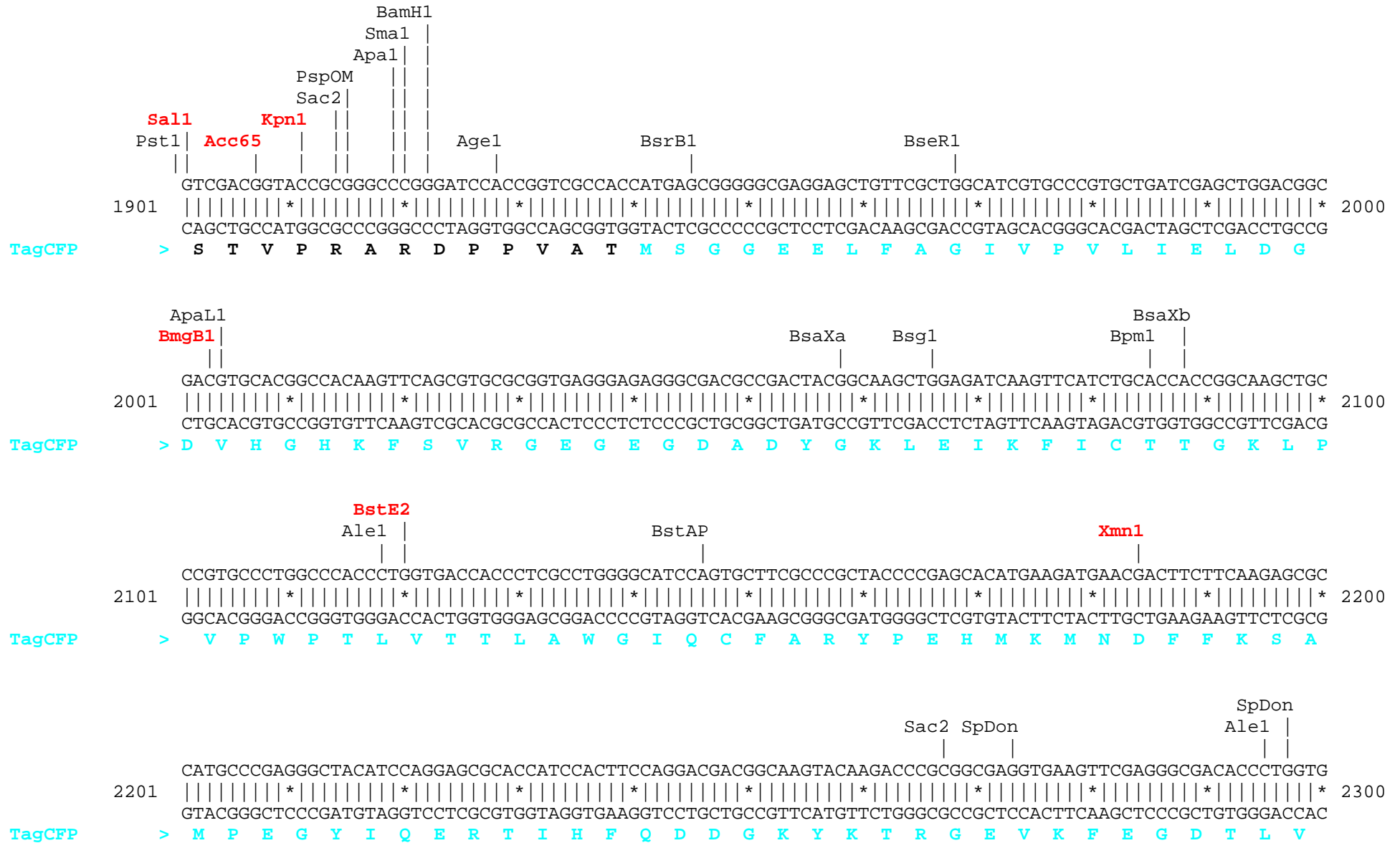
Unique sites are shown in red. The location given specifies the 3' end of the cut DNA (the base to the left of the cut site). TagCFP amino acids are shown in cyan, keratin amino acids are shown in green, linker amino acids are shown in black.













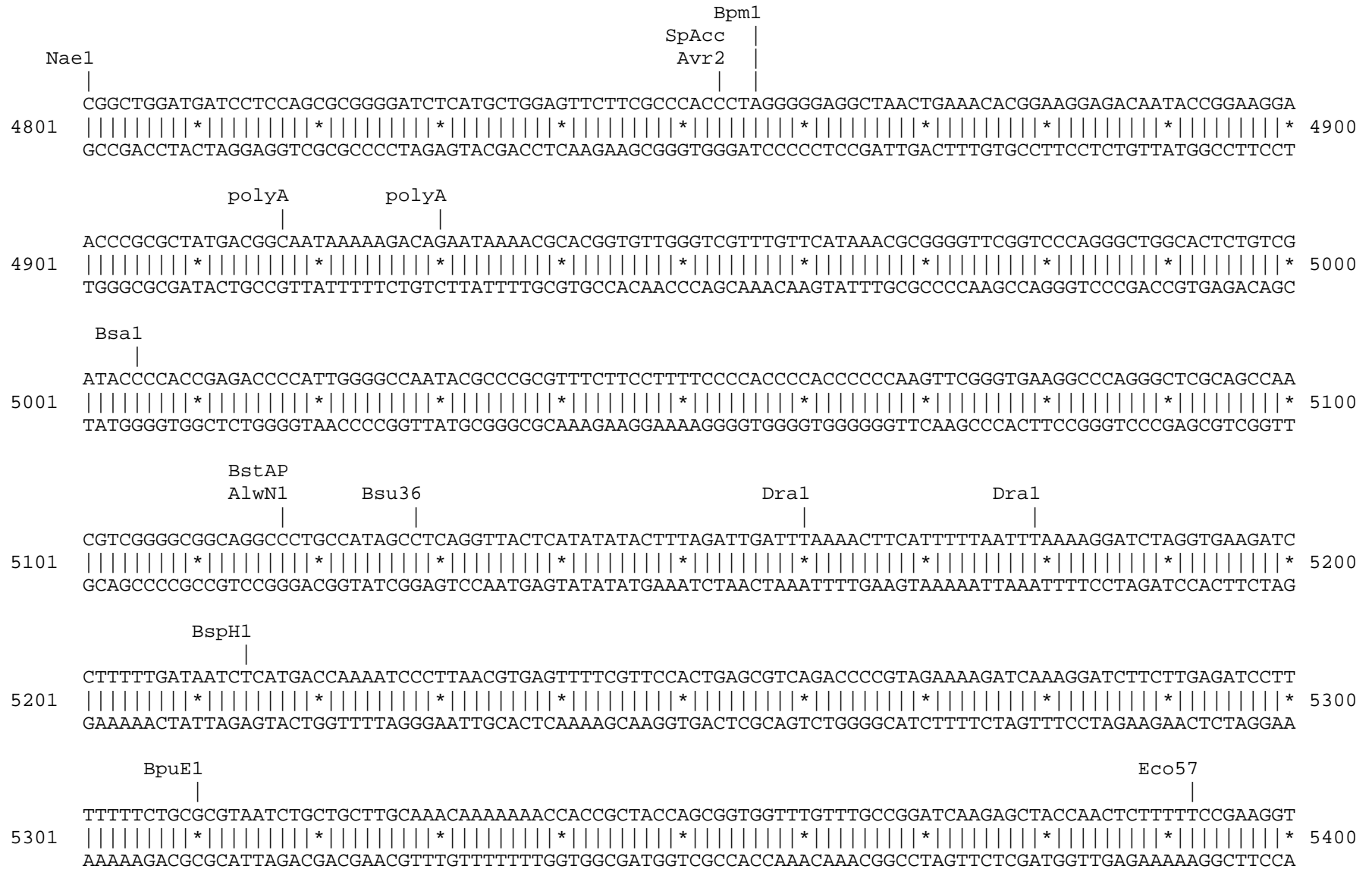


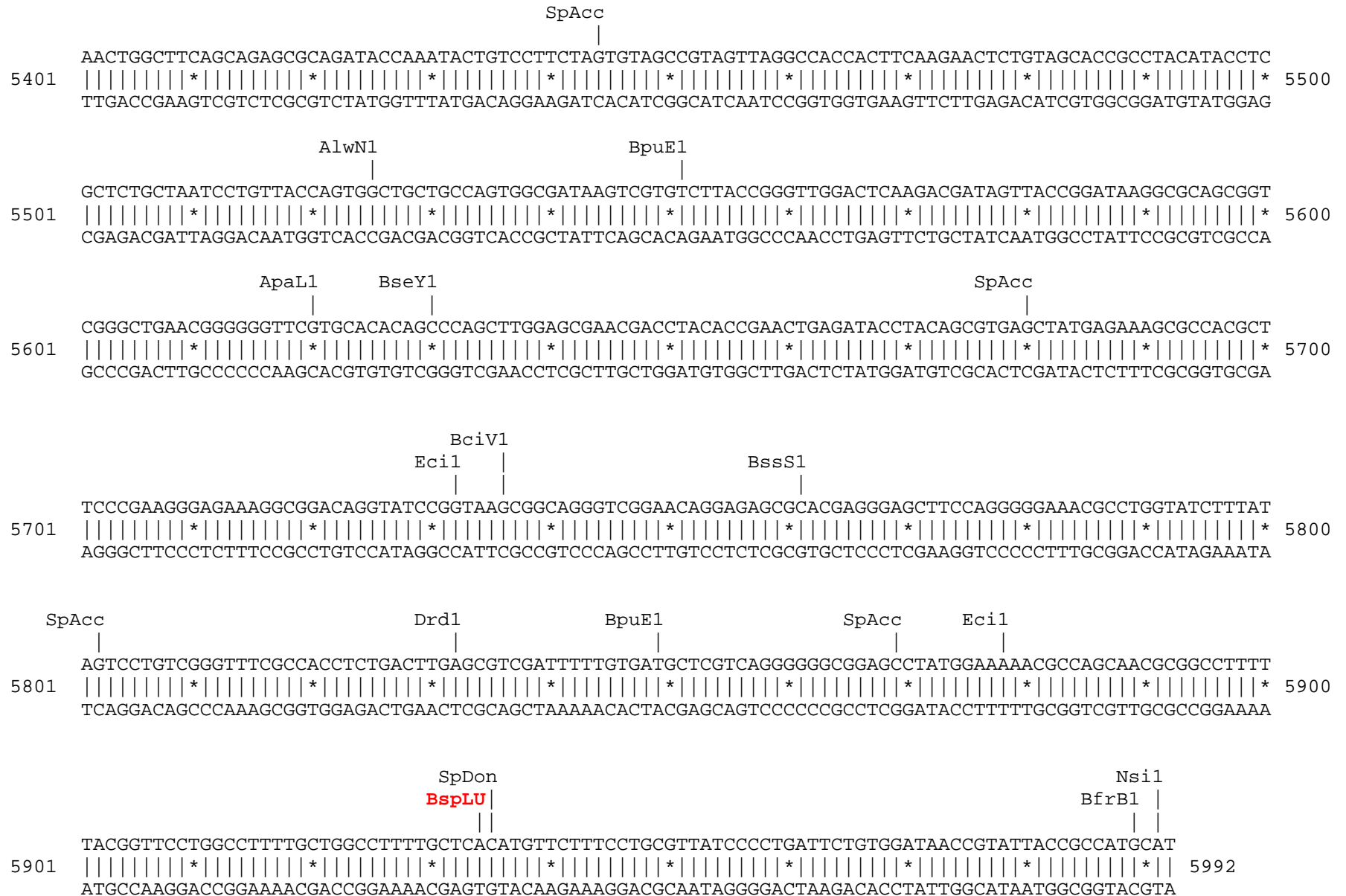












Found:

|              |              |              |              |              |       |       |              |              |              |              |              |              |              |
|--------------|--------------|--------------|--------------|--------------|-------|-------|--------------|--------------|--------------|--------------|--------------|--------------|--------------|
| Aat2         | <b>Acc65</b> | <b>Afl2</b>  | Age1         | Ahd1         | Ale1  | AlwN1 | Apa1         | Apal1        | <b>Ase1</b>  | Avr2         | BamH1        | <b>BbvC1</b> | BciV1        |
| BfrB1        | Bgl1         | <b>Bgl2</b>  | <b>BmgB1</b> | Bmr1         | Bpm1  | Bpu10 | BpuE1        | Bsa1         | BsaB1        | BsaXa        | BsaXb        | BseR1        | BseY1        |
| Bsg1         | Bsm1         | BsmB1        | BspH1        | <b>BspLU</b> | BspM1 | BsrB1 | <b>BsrD1</b> | <b>BsrG1</b> | BssS1        | BstAP        | <b>BstB1</b> | <b>BstE2</b> | <b>BstX1</b> |
| Bsu36        | BtgZ1        | <b>Bts1</b>  | <b>_Chi</b>  | <b>Clal</b>  | Dra1  | Dra3  | Drd1         | Eag1         | Ear1         | Ecil         | Eco57        | <b>EcoN1</b> | <b>EcoR1</b> |
| <b>Fsp1</b>  | <b>Hpa1</b>  | Kas1         | <b>Kpn1</b>  | <b>Mfe1</b>  | Msc1  | Nae1  | Nar1         | Nco1         | <b>Nde1</b>  | NgoM4        | <b>Nhe1</b>  | <b>Not1</b>  | Nsi1         |
| <b>PflF1</b> | PflM1        | polyA        | Psi1         | PspOM        | Pst1  | Pvu2  | <b>Rsr2</b>  | Sac2         | <b>Sall1</b> | <b>SanD1</b> | Sap1         | <b>Sca1</b>  | <b>SexA1</b> |
| <b>Sfi1</b>  | Sma1         | <b>SnaB1</b> | SpAcc        | SpDon        | Sph1  | Ssp1  | Stul         | <b>T7Ter</b> | <b>Xba1</b>  | Xcm1         | <b>Xmn1</b>  |              |              |

Unique:

|              |              |              |              |              |              |              |              |              |              |              |              |              |              |
|--------------|--------------|--------------|--------------|--------------|--------------|--------------|--------------|--------------|--------------|--------------|--------------|--------------|--------------|
| <b>Acc65</b> | <b>Afl2</b>  | <b>Ase1</b>  | <b>BbvC1</b> | <b>Bgl2</b>  | <b>BmgB1</b> | <b>BspLU</b> | <b>BsrD1</b> | <b>BsrG1</b> | <b>BstB1</b> | <b>BstE2</b> | <b>BstX1</b> | <b>Bts1</b>  | <b>_Chi</b>  |
| <b>Clal</b>  | <b>EcoN1</b> | <b>EcoR1</b> | <b>Fsp1</b>  | <b>Hpa1</b>  | <b>Kpn1</b>  | <b>Mfe1</b>  | <b>Nde1</b>  | <b>Nhe1</b>  | <b>Not1</b>  | <b>PflF1</b> | <b>Rsr2</b>  | <b>Sall1</b> | <b>SanD1</b> |
| <b>Sca1</b>  | <b>SexA1</b> | <b>Sfi1</b>  | <b>SnaB1</b> | <b>T7Ter</b> | <b>Xba1</b>  | <b>Xmn1</b>  |              |              |              |              |              |              |              |

Not found:

|       |       |       |       |       |       |       |      |       |       |       |       |       |       |
|-------|-------|-------|-------|-------|-------|-------|------|-------|-------|-------|-------|-------|-------|
| Aar1  | Ac11  | Afe1  | Asc1  | AsiS1 | Baela | Baelb | Bbs1 | BcglA | Bcglb | Bcl1  | Blp1  | BsiW1 | BspE1 |
| BssH2 | BstZ1 | BxatB | BxatL | BxatR | BxatP | Ecl2  | EcoK | EcoRV | FCatB | FCatL | FCatR | FCatP | ScFRT |
| Fse1  | FspA1 | Hind3 | I_Ceu | loxP  | Mlu1  | Nru1  | Pac1 | Pme1  | Pml1  | PshA1 | Pvu1  | R4atB | R4atL |
| R4atP | R4atR | Sac1  | Sbf1  | Sgf1  | SgrA1 | Spe1  | Srf1 | Swal  | T3RNA | T7RNA | PISce | Xho1  |       |

Excluded by site complexity:

|       |       |       |       |       |       |       |       |       |       |       |       |       |       |
|-------|-------|-------|-------|-------|-------|-------|-------|-------|-------|-------|-------|-------|-------|
| Acc1  | Ac11  | Afl3  | Alu1  | Alw1  | Apo1  | Ava1  | Ava2  | Ban1  | Ban2  | Bbv1  | BceA1 | Bfa1  | Bme15 |
| BsaA1 | BsaH1 | BsaJ1 | BsaW1 | BseM2 | BsiE1 | BsiH1 | Bsl1  | BsmA1 | BsmF1 | Bsp12 | BspCa | BspCb | Bsr1  |
| BsrF1 | BssK1 | BstF5 | BstN1 | BstU1 | BstY1 | Btg1  | Cac8  | CviJ1 | Dde1  | Eae1  | EcoO1 | Faul  | Fnu4H |
| Fok1  | Hae2  | Hae3  | Hga1  | Hha1  | Hinc2 | Hinf1 | HinP1 | Hpa2  | Hph1  | Hpy99 | Hpy1  | Hpy3  | HpyC3 |
| HpyC4 | HpyC5 | Mae3  | Mbo2  | Mnl1  | Mse1  | Msl1  | MspA1 | Mwo1  | Nci1  | Nla3  | Nla4  | Nsp1  | Ple1  |
| PpuM1 | Rsa1  | Sau3A | Sau96 | SfaN1 | Sfc1  | Sml1  | Sty1  | Taq1  | Tat1  | Tfi1  | Tse1  | Tsp45 | Tsp50 |
| TspR1 |       |       |       |       |       |       |       |       |       |       |       |       |       |