

```

                                     Bsg1
                                     Bmr1
                                     SgrA1
                                     BtgZ1
                                     BstE2
                                     Ale1
                                     Bpm1
                                     Kas1
                                     Nar1
                                     Bmr1
801  GGTGGATGCCAGTTCATCTGCACCACCGGCGATGTGCCCCTGCCCTGGAGCACCCTGGTACCACCCTGACCTACGGCGCCAGTGCTTCGCCAAGTAC
      |||||*|||||*|||||*|||||*|||||*|||||*|||||*|||||*|||||*|||||*|||||*|||||*|||||*|||||*|||||* 900
TurboYFP > V D A Q F I C T T G D V P V P W S T L V T T L T Y G A Q C F A K Y

```

```

                                     SpAcc
                                     Xmn1
                                     Eco57
                                     Sph1
                                     Bsg1
                                     BtgZ1
901  GGCCCCGAGCTGAAGGATTTCTACAAGAGCTGCATGCCCGATGGCTACGTGCAGGAGCGCACCATCACCTTCGAGGGCGATGGCAATTTCAAGACCCGCG
      |||||*|||||*|||||*|||||*|||||*|||||*|||||*|||||*|||||*|||||*|||||*|||||*|||||*|||||*|||||* 1000
TurboYFP > G P E L K D F Y K S C M P D G Y V Q E R T I T F E G D G N F K T R A

```

```

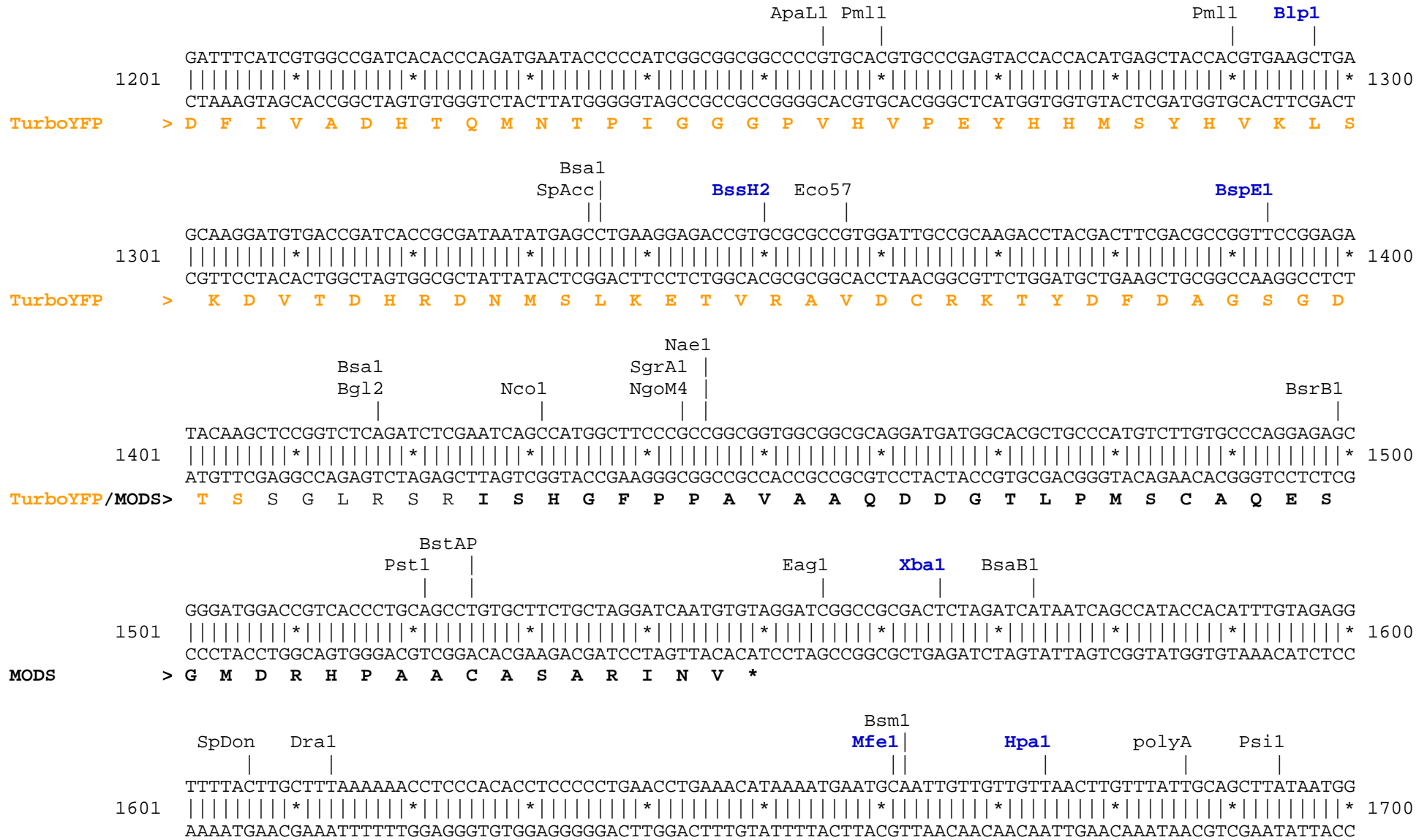
                                     PflM1
                                     BseY1
                                     Pml1
                                     Msc1
                                     Msc1
                                     BstE2
                                     BsrG1
                                     Msc1
1001 CCGAGGTGACCTTCGAGAATGGCAGCGTGTACAATCGCGTGAAGCTGAATGGCCAGGGCTTCAAGAAGGATGGCCACGTGCTGGGCAAGAATCTGGAGTT
      |||||*|||||*|||||*|||||*|||||*|||||*|||||*|||||*|||||*|||||*|||||*|||||*|||||*|||||*|||||* 1100
TurboYFP > E V T F E N G S V Y N R V K L N G Q G F K K D G H V L G K N L E F

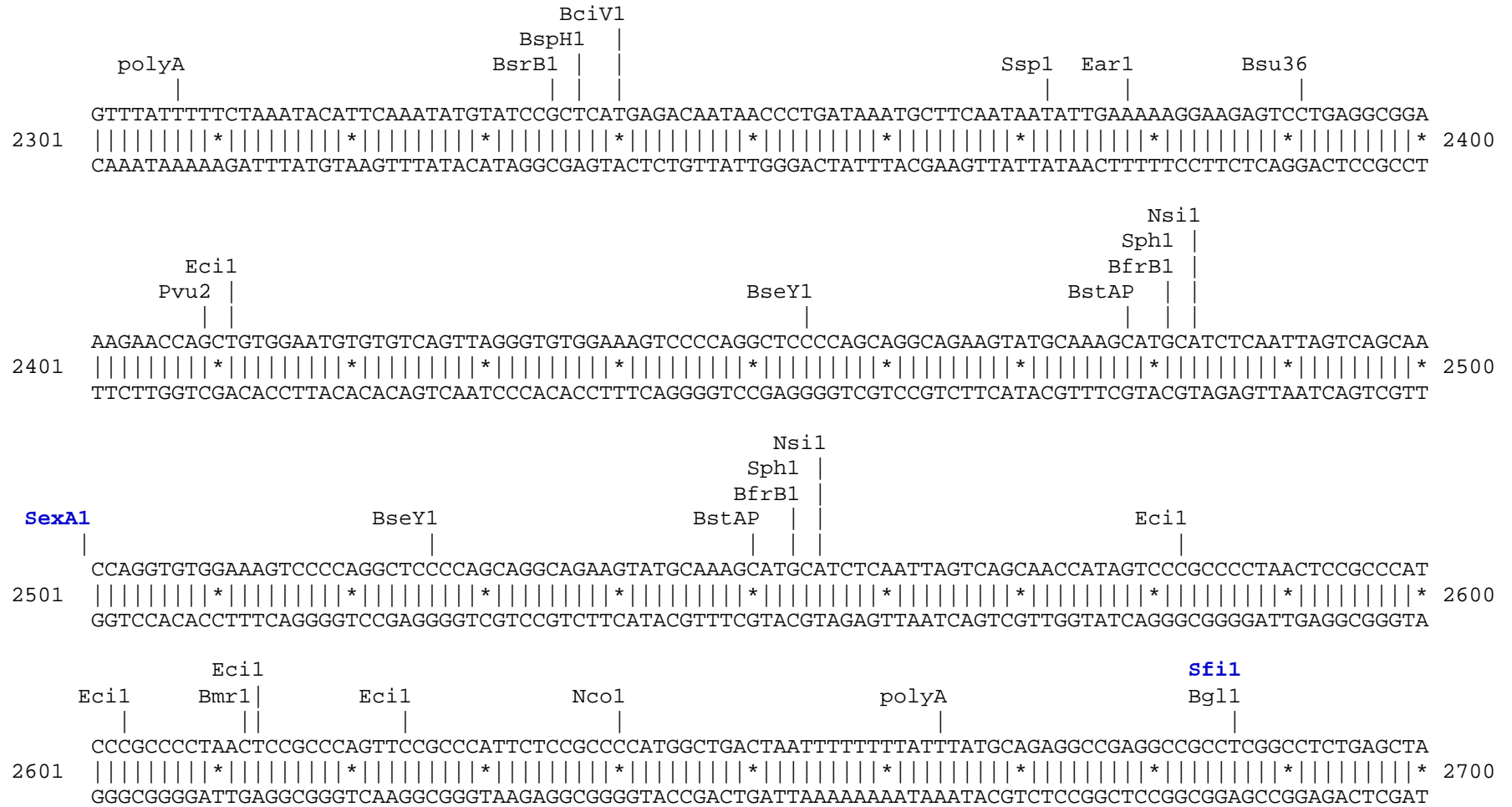
```

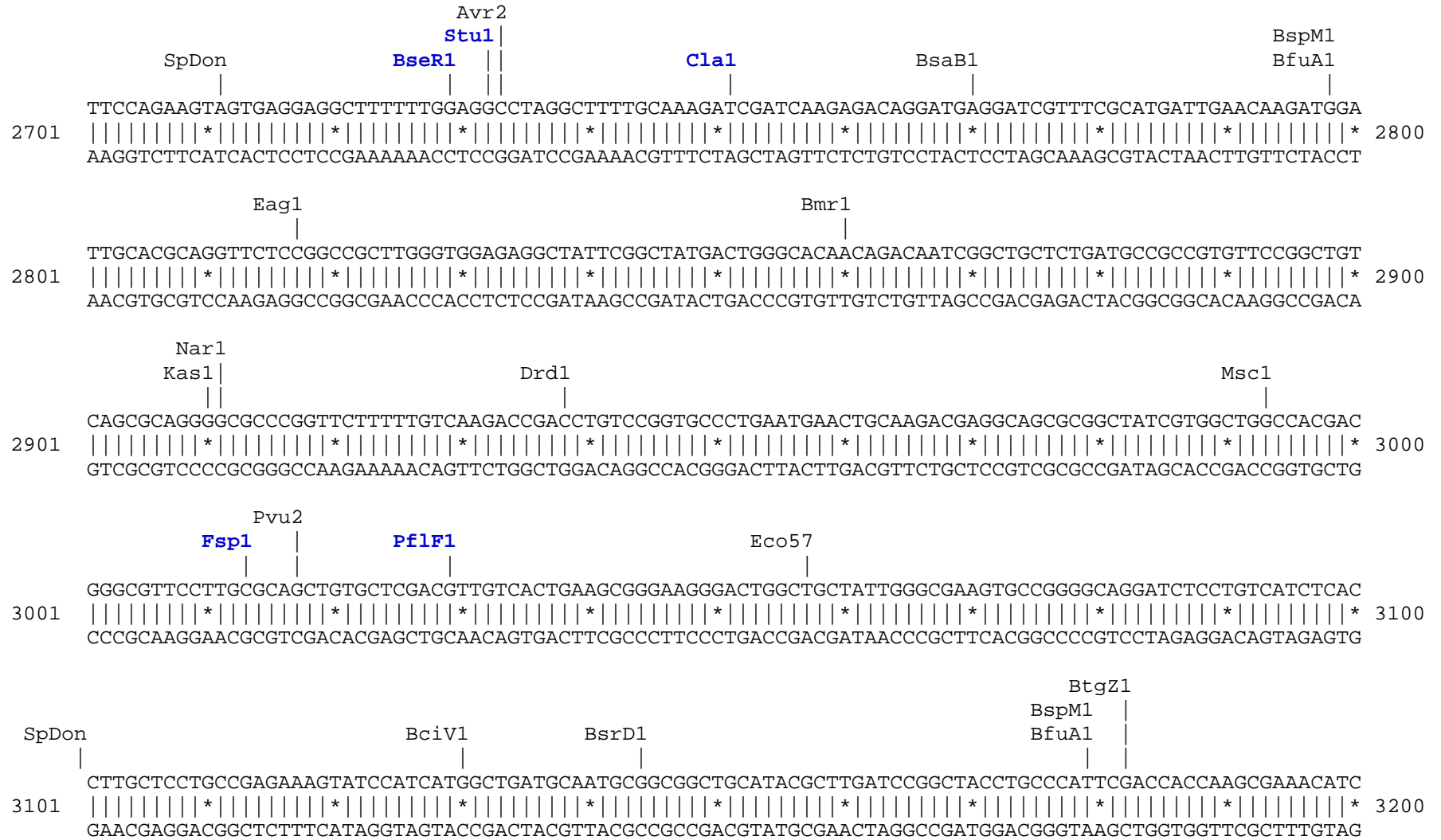
```

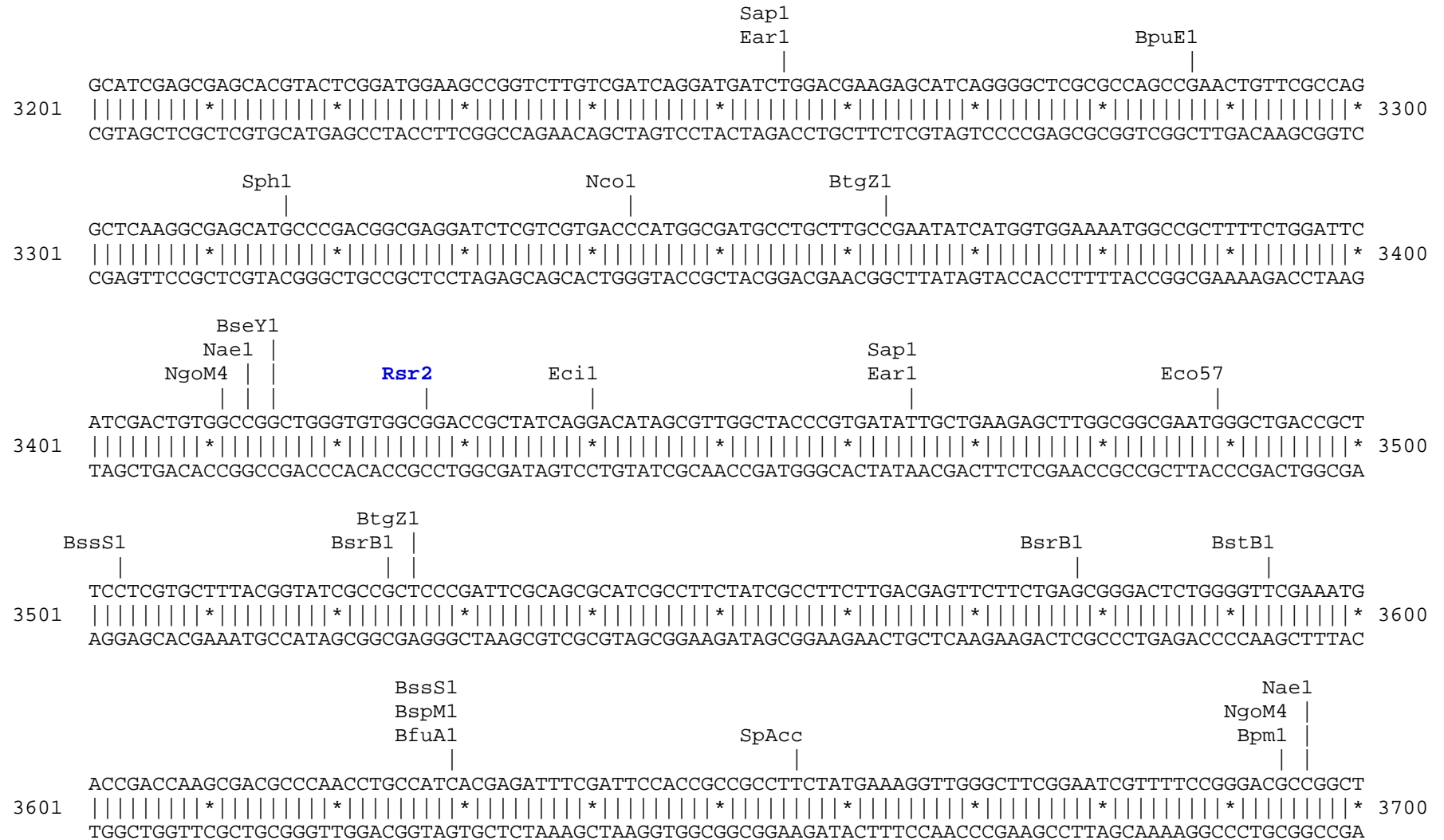
                                     Bpm1
                                     Bts1
                                     SpDon
                                     BsrG1
                                     Sap1
                                     Earl
                                     BssS1
                                     Eco57
1101 CAATTTCACCCCCACTGCCTGTACATCTGGGGCGATCAGGCCAATCACGGCCTGAAGAGCGCCTTCAAAAATCTGCCACGAGATCACGGCAGCAAGGGC
      |||||*|||||*|||||*|||||*|||||*|||||*|||||*|||||*|||||*|||||*|||||*|||||*|||||*|||||*|||||* 1200
TurboYFP > N F T P H C L Y I W G D Q A N H G L K S A F K I C H E I T G S K G

```










```

                                     Bpm1
                                     SpAcc
                                     Avr2
                                     |
                                     |
3701 GGATGATCCTCCAGCGGGGATCTCATGCTGGAGTTCTTTCGCCACCCCTAGGGGGAGGCTAACTGAAACACGGAAGGAGACAATACCGGAAGGAACCCG
      |||||*|||||*|||||*|||||*|||||*|||||*|||||*|||||*|||||*|||||*|||||*|||||*|||||*|||||*|||||* 3800
      CCTACTAGGAGGTCGCGCCCCTAGAGTACGACCTCAAGAAGCGGGTGGGATCCCCCTCCGATTGACTTTGTGCCTTCCTCTGTTATGGCCTTCCTTGGGC

      polyA      polyA
      |          |
3801 CGCTATGACGGCAATAAAAAAGACAGAATAAAACGCACGGTGTGGGTGCGTTTGTTCATAAACCGGGGTTTCGGTCCCAGGGCTGGCACTCTGTGATAACC
      |||||*|||||*|||||*|||||*|||||*|||||*|||||*|||||*|||||*|||||*|||||*|||||*|||||*|||||*|||||* 3900
      GCGATACTGCCGTTATTTTTCTGTCTTATTTTTGCGTGCCACAACCCAGCAAACAAGTATTTGCGCCCCAAGCCAGGGTCCCAGCCGTGAGACAGCTATGG

Bsa1                                     SpDon
|                                     |
3901 CCACCGAGACCCCATTTGGGGCCAATACGCCCGGTTTCTTCTTTTCCCCACCCCAACCCCAAGTTTCGGGTGAAGGCCAGGGCTCGCAGCCAACGTTCG
      |||||*|||||*|||||*|||||*|||||*|||||*|||||*|||||*|||||*|||||*|||||*|||||*|||||*|||||*|||||* 4000
      GGTGGCTCTGGGGTAACCCCGGTTATGCGGGCGCAAAGAAGGAAAAGGGGTGGGGTGGGGGGTTCAAGCCCACTTCCGGGTCCCAGCGTCGGTTGCAGC

      BstAP      AlwN1      Bsu36                                     Dra1      Dra1
      |          |          |                                     |          |
4001 GGGCGGCAGGCCCTGCCATAGCCTCAGGTTACTCATATATACTTTAGATTGATTTAAAACCTTCATTTTTAATTTAAAAGGATCTAGGTGAAGATCCTTTTT
      |||||*|||||*|||||*|||||*|||||*|||||*|||||*|||||*|||||*|||||*|||||*|||||*|||||*|||||*|||||* 4100
      CCCGCCGTCGGGACGGTATCGGAGTCCAATGAGTATATATGAAATCTAACTAAATTTTGAAGTAAAAATTAAATTTTCTAGATCCACTTCTAGGAAAA

      BspH1
      |
4101 TGATAATCTCATGACCAAAAATCCCTTAACGTGAGTTTTTCGTTCCACTGAGCGTCAGACCCCGTAGAAAAGATCAAAGGATCTTCTTGAGATCCTTTTTTTT
      |||||*|||||*|||||*|||||*|||||*|||||*|||||*|||||*|||||*|||||*|||||*|||||*|||||*|||||*|||||* 4200
      ACTATTAGAGTACTGGTTTTAGGGAATTGCACTCAAAGCAAGGTGACTCGCAGTCTGGGGCATCTTTTCTAGTTTCTAGAAAGAACTCTAGGAAAAAAA

BpuE1                                     Eco57
|                                     |
4201 CTGCGCGTAATCTGCTGCTTGCAAACAAAAAACCCGCTACCAGCGGTGGTTTTGTTTGCCGGATCAAGAGCTACCAACTCTTTTTCCGAAGGTAACCTG
      |||||*|||||*|||||*|||||*|||||*|||||*|||||*|||||*|||||*|||||*|||||*|||||*|||||*|||||*|||||* 4300
      GACGCGCATTAGACGACGAACGTTTGTTTTTTTGGTGGCGATGGTCGCCACCAAACAAACGGCCTAGTTCTCGATGGTTGAGAAAAAGGCTTCCATTGAC
```

```
                                SpAcc
                                |
GCTTCAGCAGAGCGCAGATACCAAATACTGTCCTTCTAGTGTAGCCGTAGTTAGGCCACCACTTCAAGAACTCTGTAGCACCGCCTACATACCTCGCTCT
4301 |||||*|||||*|||||*|||||*|||||*|||||*|||||*|||||*|||||*|||||*|||||* 4400
CGAAGTCGTCTCGCGTCTATGGTTTATGACAGGAAGATCACATCGGCATCAATCCGGTGGTGAAGTTCTTGAGACATCGTGGCGGATGTATGGAGCGAGA

                                AlwN1                                BpuE1
                                |                                |
GCTAATCCTGTTACCAGTGGCTGCTGCCAGTGGCGATAAGTCGTGTCTTACCGGGTTGGACTCAAGACGATAGTTACCGGATAAGGCGCAGCGGTTCGGGC
4401 |||||*|||||*|||||*|||||*|||||*|||||*|||||*|||||*|||||*|||||*|||||* 4500
CGATTAGGACAATGGTCACCGACGACGGTCACCGCTATTGAGCACAGAATGGCCAACCTGAGTTCTGCTATCAATGGCCTATTCCGCGTCGCCAGCCCCG

                                ApaL1    BseY1                                SpAcc
                                |    |                                |
TGAACGGGGGTTTCGTGCACACAGCCCAGCTTGGAGCGAACGACCTACACCGAACTGAGATACCTACAGCGTGAGCTATGAGAAAGCGCCACGCTTCCCG
4501 |||||*|||||*|||||*|||||*|||||*|||||*|||||*|||||*|||||*|||||*|||||* 4600
ACTTGCCCCCAAGCACGTGTGTCCGGTTCGAACCTCGCTTGTCTGGATGTGGCTTGACTCTATGGATGTCGCACTCGATACTCTTTCGCGGTGCGAAGGGC

                                BciV1
                                |
                                Ecil    |                                BssS1                                SpAcc
                                |    |                                |                                |
AAGGGAGAAAAGGCGGACAGGTATCCGGTAAGCGGCAGGGTTCGGAACAGGAGAGCGCACGAGGGAGCTTCCAGGGGAAAACGCCTGGTATCTTTATAGTCC
4601 |||||*|||||*|||||*|||||*|||||*|||||*|||||*|||||*|||||*|||||*|||||* 4700
TTCCCTCTTTCGCGCTGTCCATAGGCCATTGCGCGTCCCAGCCTTGTCTCTCGCGTGCTCCCTCGAAGGTCCCCCTTTGCGGACCATAGAAATATCAGG

                                Drd1    BpuE1                                SpAcc    Ecil
                                |    |                                |    |
TGTCGGGTTTCGCCACCTCTGACTTGAGCGTCGATTTTTGTGATGCTCGTCAGGGGGGCGGAGCCTATGGAAAAACGCCAGCAACGCGGCCTTTTTACGG
4701 |||||*|||||*|||||*|||||*|||||*|||||*|||||*|||||*|||||*|||||*|||||* 4800
ACAGCCCAAAGCGGTGGAGACTGAACTCGCAGCTAAAAAACTACGAGCAGTCCCCCGCCTCGGATACCTTTTTTTCGGGTCGTTGCGCCGGAAAAATGCC

                                SpDon
                                |
                                BspLU|                                NsiI
                                |    |                                |
TTCTGGCCTTTTGCTGGCCTTTTGCTCACATGTTCTTTTCTGCGTTATCCCCTGATTCTGTGGATAACCGTATTACCGCCATGCAT
4801 |||||*|||||*|||||*|||||*|||||*|||||*|||||*|||||*|||||*|||||*|||||* 4887
AAGGACCGGAAAACGACCGGAAAACGAGTGTACAAGAAAGGACGCAATAGGGGACTAAGACACCTATTGGCATAATGGCGGTACGTA
```

Found:

Aat2	Acc65	Afe1	Afl2	Age1	Ale1	AlwN1	Apa1	ApaL1	Ase1	Avr2	BamH1	BciV1	BfrB1
BfuA1	Bgl1	Bgl2	Blp1	Bmr1	Bpm1	BpuE1	Bsa1	BsaB1	BsaXa	BsaXb	BseR1	BseY1	Bsg1
Bsm1	BspE1	BspH1	BspLU	BspM1	BsrB1	BsrD1	BsrG1	BssH2	BssS1	BstAP	BstB1	BstE2	Bsu36
BtgZ1	Bts1	Clal	Dra1	Dra3	Drd1	Eag1	Ear1	Eci1	Eco57	EcoR1	Fsp1	Hind3	Hpa1
Kas1	Kpn1	Mfe1	Msc1	Nae1	Nar1	Nco1	Nde1	NgoM4	Nhe1	Nsi1	PflF1	PflM1	Pml1
polyA	Psil	PspOM	Pst1	Pvu2	Rsr2	Sac1	Sac2	Sall	Sap1	SexA1	Sfi1	SgrA1	Sma1
SnaB1	SpAcc	SpDon	Sph1	Ssp1	Stu1	Xba1	Xho1	Xmn1					

Unique:

Acc65	Afe1	Afl2	Age1	Ale1	Apa1	Ase1	BamH1	Blp1	BsaXa	BsaXb	BseR1	BspE1	BspLU
BssH2	Clal	Dra3	EcoR1	Fsp1	Hind3	Hpa1	Kpn1	Mfe1	Nde1	Nhe1	PflF1	PflM1	PspOM
Rsr2	Sac1	Sall	SexA1	Sfi1	Sma1	SnaB1	Stu1	Xba1	Xho1	Xmn1			

Not found:

Aar1	Acl1	Ahd1	Asc1	AsiS1	Baela	Baelb	Bbs1	BbvC1	BcglA	Bcglb	Bcl1	BmgB1	Bpu10
BsiW1	BsmB1	BstX1	BstZ1	_Chi	EcoK	EcoN1	EcoRV	ScFRT	Fse1	FspA1	I_Ceu	loxP	Mlu1
Not1	Nru1	Pac1	Pme1	PshA1	Pvu1	SanD1	Sbf1	Scal	Sgf1	Spe1	Srf1	Swal	T3RNA
T7RNA	T7Ter	PISce	Xcm1										

Excluded by site complexity:

Acc1	Acil	Afl3	Alu1	Alw1	Apo1	Ava1	Ava2	Ban1	Ban2	Bbv1	BceA1	Bfa1	Bme15
BsaA1	BsaH1	BsaJ1	BsaW1	BseM2	BsiE1	BsiH1	Bsl1	BsmA1	BsmF1	Bsp12	BspCa	BspCb	Bsr1
BsrF1	BssK1	BstF5	BstN1	BstU1	BstY1	Btg1	Cac8	CviJ1	Dde1	Eae1	EcoO1	Fau1	Fnu4H
Fok1	Hae2	Hae3	Hga1	Hha1	Hinc2	Hinf1	HinP1	Hpa2	Hph1	Hpy99	Hpy1	Hpy3	HpyC3
HpyC4	HpyC5	Mae3	Mbo2	Mnl1	Mse1	Msl1	MspA1	Mwo1	Nci1	Nla3	Nla4	Nsp1	Ple1
PpuM1	Rsa1	Sau3A	Sau96	SfaN1	Sfc1	Sml1	Sty1	Taq1	Tat1	Tfil	Tse1	Tsp45	Tsp50
TspR1													