



Aat2Eci1

```

TAGCGGTTTGACTCACGGGGATTTCCAAGTCTCCACCCCATTGACGTCAATGGGAGTTTGTGTTTGGCACCAAAATCAACGGGACTTTCCAAAATGTCGTA
401 |||||*|||||*|||||*|||||*|||||*|||||*|||||*|||||*|||||*|||||*|||||*|||||*|||||*|||||*|||||* 500
ATCGCCAAACTGAGTGCCCCCTAAAGGTTTCAGAGGTGGGGTAACTGCAGTTACCCTCAAACAAAACCGTGGTTTTAGTTGCCCTGAAAGGTTTTACAGCAT

```

Nhe1 Afe1

```

ACAAC TCCGCCCCATTGACGCAAATGGGCGGTAGGCCGTGTACGGTGGGAGGTCTATATAAGCAGAGCTGGTTTTAGTGAACCGTCAGATCCGCTAGCGCTA
501 |||||*|||||*|||||*|||||*|||||*|||||*|||||*|||||*|||||*|||||*|||||*|||||*|||||*|||||*|||||* 600
TGTTGAGGCGGGGTAAC TGC G TTTACCCGCCATCCGCACATGCCACCCTCCAGATATATTCGTCTCGACCAAATCACTTGGCAGTCTAGGCGATCGCGAT

```

Nar1Kas1Eco57Msc1

```

CCGGTCGCCACCATGAGCAGCGGGCGCCCTGCTGTTCCACGGCAAGATCCCCTACGTGGTGGAGATGGAGGGCGATGTGGATGGCCACACCTTCAGCATCC
601 |||||*|||||*|||||*|||||*|||||*|||||*|||||*|||||*|||||*|||||*|||||*|||||*|||||*|||||*|||||* 700
GGCCAGCGGTGGTACTCGTTCGCCCGGGGACGACAAGGTGCCGTTCTAGGGGATGCACCACCTCTACCTCCCGCTACACCTACCGGTGTGGAAGTCGTAGG
PhiYFP-m > M S S G A L L F H G K I P Y V V E M E G D V D G H T F S I R

```

Sac2Bsg1Bmr1SgrA1BstE2Ale1

```

GCGGTAAGGGCTACGGCGATGCCAGCGTGGGCAAGGTGGATGCCAGTTCATCTGCACCACCGGCGATGTGCCCGTGCCCTGGAGCACCCCTGGTGACCAC
701 |||||*|||||*|||||*|||||*|||||*|||||*|||||*|||||*|||||*|||||*|||||*|||||*|||||*|||||*|||||* 800
CGCCATTCGCGATGCCGCTACGGTTCGCACCCGTTCCACCTACGGGTCAAGTAGACGTGGTGGCCGCTACACGGGCACGGGACCTCGTGGGACCACTGGTG
PhiYFP-m > G K G Y G D A S V G K V D A Q F I C T T G D V P V P W S T L V T T

```

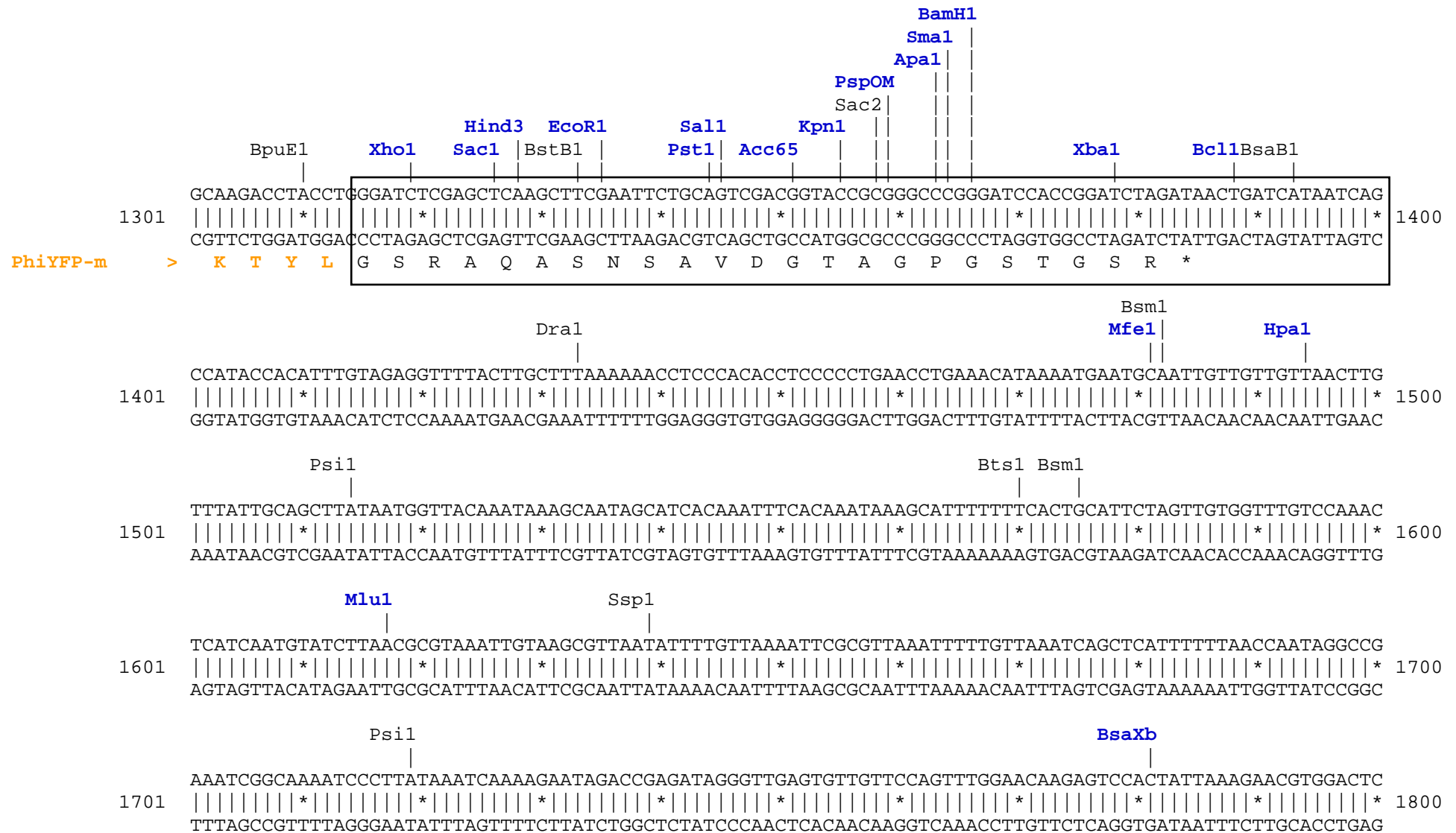
Nar1Kas1Bpm1Bmr1Xmn1Eco57Sph1

```

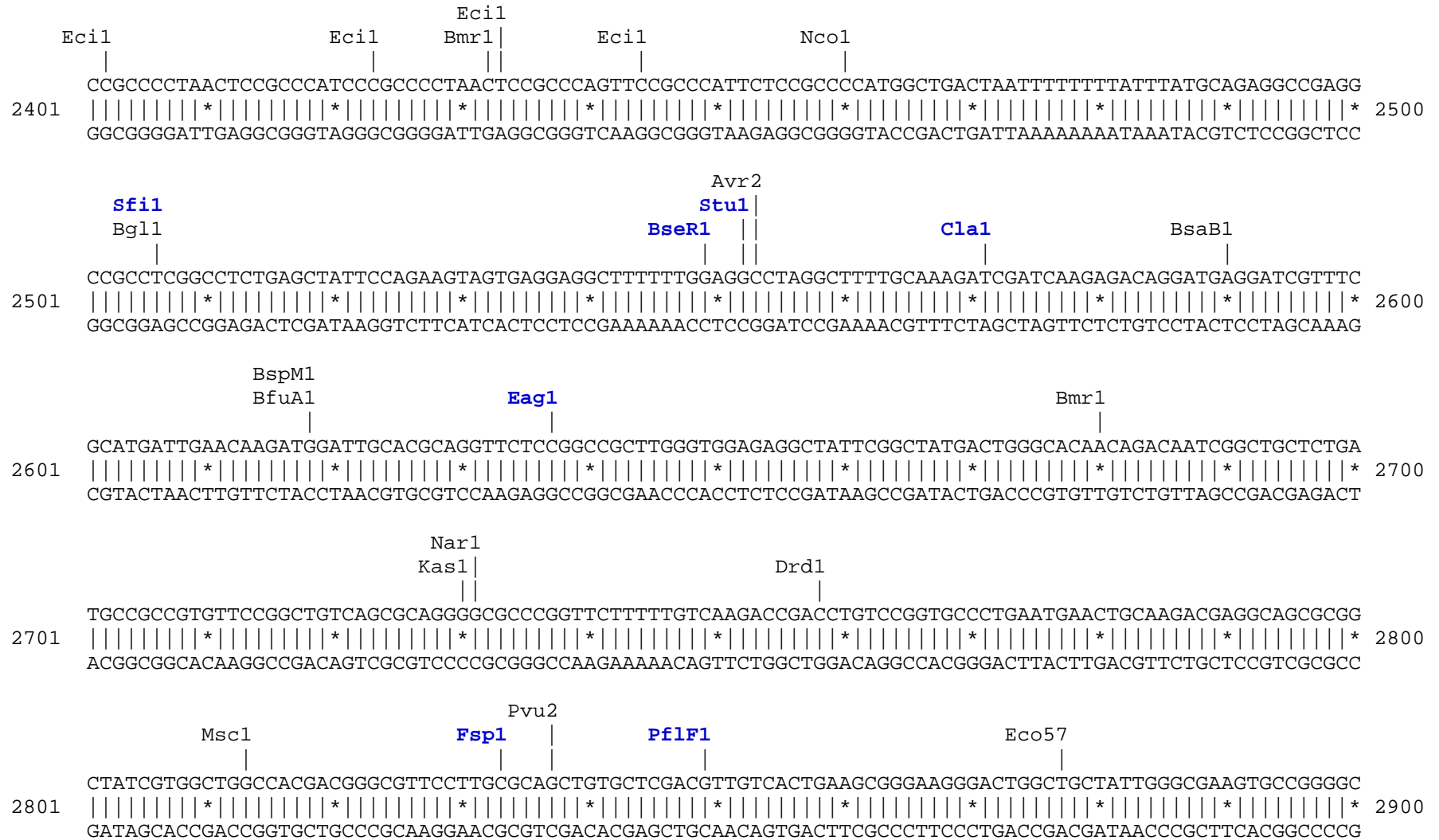
CCTGACCTACGGCGCCAGTGCTTCGCCAAGTACGGCCCCGAGCTGAAGGATTTCTACAAGAGCTGCATGCCCGATGGCTACGTGCAGGAGCGCACCATC
801 |||||*|||||*|||||*|||||*|||||*|||||*|||||*|||||*|||||*|||||*|||||*|||||*|||||*|||||*|||||* 900
GGACTGGATGCCGCGGGTCACGAAGCGGTTTCATGCCGGGGCTCGACTTCCTAAAGATGTTCTCGACGTACGGGCTACCGATGCACGTCCTCGCGTGGTAG
PhiYFP-m > L T Y G A Q C F A K Y G P E L K D F Y K S C M P D G Y V Q E R T I

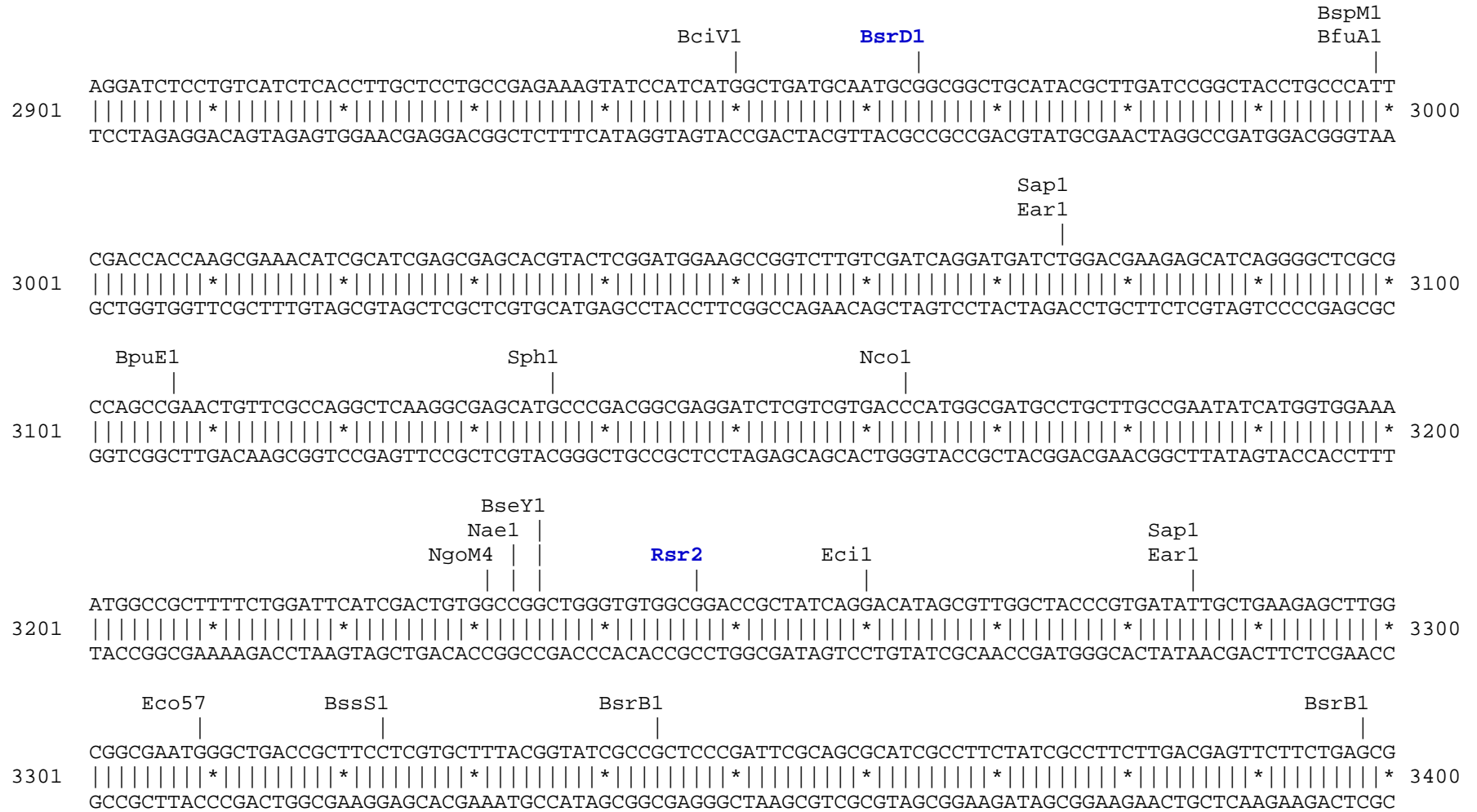
```











```

                                     BssS1
                                     BspM1
                                     BfuA1
      BstB1
      |
GGACTCTGGGGTTCGAAATGACCGACCAAGCGACGCCAACCTGCCATCACGAGATTTTCGATTCCACCGCCGCTTCTATGAAAGGTTGGGCTTCGGAAT
3401 |||||||*||||||*||||||*||||||*||||||*||||||*||||||*||||||*||||||*||||||*||||||*||||||*||||||* 3500
CCTGAGACCCCAAGCTTTACTGGCTGGTTTCGCTGCGGGTTGGACGGTAGTGCTCTAAAGCTAAGGTGGCGGCGGAAGATACTTTCCAACCCGAAGCCTTA

      NaeI
      NgoM4
      Bpm1
      |
CGTTTTCCGGGACGCCGGCTGGATGATCCTCCAGCGCGGGGATCTCATGCTGGAGTTCTTCGCCACCCCTAGGGGGAGGCTAACTGAAACACGGAAGGAG
3501 |||||||*||||||*||||||*||||||*||||||*||||||*||||||*||||||*||||||*||||||*||||||*||||||*||||||* 3600
GCAAAAGGCCCTGCGGCCGACCTACTAGGAGGTTCGCGCCCCTAGAGTACGACCTCAAGAAGCGGGTGGGATCCCCCTCCGATTGACTTTGTGCCTTCCTC

ACAATACCGGAAGGAACCCGCGCTATGACGGCAATAAAAAAGACAGAATAAAAACGCACGGTGTGGGTTCGTTTGTTCATAAACGCGGGGTTCCGGTCCCAGG
3601 |||||||*||||||*||||||*||||||*||||||*||||||*||||||*||||||*||||||*||||||*||||||*||||||*||||||* 3700
TGTTATGGCCTTCCTTGGGCGCGATACTGCCGTTATTTTTCTGTCTTATTTTTGCGTGCCACAACCCAGCAAACAAGTATTTGCGCCCCAAGCCAGGGTCC

      Bsa1
      |
GCTGGCACTCTGTGCATACCCACCGAGACCCATTGGGGCCAATACGCCCGGTTTCTTCCTTTTCCCCACCCACCCCCAAGTTCGGGTGAAGGCC
3701 |||||||*||||||*||||||*||||||*||||||*||||||*||||||*||||||*||||||*||||||*||||||*||||||*||||||* 3800
CGACCGTGAGACAGCTATGGGGTGGCTCTGGGGTAACCCCGGTTATGCGGGCGCAAAGAAGGAAAAGGGGTGGGGTGGGGGGTTCAAGCCCACTTCCGGG

      BstAP
      AlwN1
      Bsu36
      DraI
      DraI
      |
AGGGCTCGCAGCCAACGTCGGGGCGGCAGGCCCTGCCATAGCCTCAGGTTACTCATATATACTTTAGATTGATTTAAAACTTCATTTTTAATTTAAAGG
3801 |||||||*||||||*||||||*||||||*||||||*||||||*||||||*||||||*||||||*||||||*||||||*||||||*||||||* 3900
TCCCAGCGTCGGTTGCAGCCCCCGCGTCCGGGACGGTATCGGAGTCCAATGAGTATATATGAAATCTAACTAAATTTTGAAGTAAAAATTAATTTTCC

      BspH1
      |
ATCTAGGTGAAGATCCTTTTTGATAATCTCATGACCAAAATCCCTTAACGTGAGTTTTTCGTTCCACTGAGCGTCAGACCCCGTAGAAAAGATCAAAGGAT
3901 |||||||*||||||*||||||*||||||*||||||*||||||*||||||*||||||*||||||*||||||*||||||*||||||*||||||* 4000
TAGATCCACTTCTAGGAAAACTATTAGAGTACTGGTTTTAGGGAATTGCACTCAAAGCAAGGTGACTCGCAGTCTGGGGCATCTTTTCTAGTTTCTTA

```



```

                                BpuE1
                                |
4001 CTTCTTGAGATCCTTTTTTCTGCGGTAATCTGCTGCTTGCAAACAAAAAACCACCGCTACCAGCGGTGGTTTTGTTTGCCGGATCAAGAGCTACCAAC
    |||||*|||||*|||||*|||||*|||||*|||||*|||||*|||||*|||||*|||||*|||||*|||||*|||||* 4100
    GAAGAACTCTAGGAAAAAAGACGCGCATTAGACGACGAACGTTTGTTTTTTTGGTGGCGATGGTCGCCACCAAACAAACGGCCTAGTTCTCGATGGTTG

                                Eco57
                                |
4101 TCTTTTCCGAAAGGTAAGTGGCTTCAGCAGAGCGCAGATACCAAATACTGTCCTTCTAGTGTAGCCGTAGTTAGGCCACCACTTCAAGAACTCTGTAGCA
    |||||*|||||*|||||*|||||*|||||*|||||*|||||*|||||*|||||*|||||*|||||*|||||*|||||* 4200
    AGAAAAAGGCTTCCATTGACCGAAGTCGTCTCGCGTCTATGGTTTATGACAGGAAGATCACATCGGCATCAATCCGGTGGTGAAGTTCTTGAGACATCGT

                                AlwN1                                BpuE1
                                |                                |
4201 CCGCCTACATACCTCGCTCTGCTAATCCTGTTACCAGTGGCTGCTGCCAGTGGCGATAAGTCGTGTCTTACCGGGTTGGACTCAAGACGATAGTTACCGG
    |||||*|||||*|||||*|||||*|||||*|||||*|||||*|||||*|||||*|||||*|||||*|||||*|||||* 4300
    GCGGATGTATGGAGCGAGACGATTAGGACAATGGTCACCGACGACGGTCACCGCTATTTCAGCACAGAATGGCCCAACCTGAGTTCTGCTATCAATGGCC

                                ApaL1                                BseY1
                                |                                |
4301 ATAAGGCGCAGCGGTTCGGGCTGAACGGGGGGTTCGTGCACACAGCCAGCTTGGAGCGAACGACCTACACCGAACTGAGATACCTACAGCGTGAGCTATG
    |||||*|||||*|||||*|||||*|||||*|||||*|||||*|||||*|||||*|||||*|||||*|||||*|||||* 4400
    TATTCCGCTCGCCAGCCGACTTGCCCCCAAGCACGTGTGTGGGTGAACTCGCTTGCTGGATGTGGCTTGACTCTATGGATGTGCACTCGATAC

                                BciV1                                BssS1
                                |                                |
4401 AGAAAGCGCCACGCTTCCCGAAGGGGAGAAAGGCGGACAGGTATCCGGTAAGCGGCAGGGTTCGGAACAGGAGAGCGCACGAGGGGAGCTTCCAGGGGAAAC
    |||||*|||||*|||||*|||||*|||||*|||||*|||||*|||||*|||||*|||||*|||||*|||||*|||||* 4500
    TCTTTCGCGGTGCGAAGGGCTTCCCTCTTTCCGCCTGTCCATAGGCCATTTCGCCGTCAGCCTTGTCTCTCGCGTGCTCCCTCGAAGGTCCCCCTTTG

                                Drd1                                BpuE1                                Eci1
                                |                                |                                |
4501 GCCTGGTATCTTTATAGTCTGTGCGGTTTTGCCACCTCTGACTTGAGCGTCGATTTTTGTGATGCTCGTCAGGGGGCGGAGCCTATGGAAAAACGCCA
    |||||*|||||*|||||*|||||*|||||*|||||*|||||*|||||*|||||*|||||*|||||*|||||*|||||* 4600
    CGGACCATAGAAATATCAGGACAGCCCAAAGCGGTGGAGACTGAACTCGCAGCTAAAAAACTACGAGCAGTCCCCCGCCTCGGATACCTTTTTGCGGT

```

```

                                     BspLU
                                     |
GCAACGCGGCCTTTTTACGGTTCCTGGCCTTTTGCTGGCCTTTTGCTCACATGTTCTTTCTGCGTTATCCCCTGATTCTGTGGATAACCGTATTACCGC
4601 |||||*|||||*|||||*|||||*|||||*|||||*|||||*|||||*|||||*|||||*|||||* 4700
CGTTGCGCCGGAAAAATGCCAAGGACCGGAAAACGACCGGAAAACGAGTGTACAAGAAAGGACGCAATAGGGGACTAAGACACCTATTGGCATAATGGCG

      NsiI
BfrB1 |
      | |
      CATGCAT
4701 ||||| 4707
      GTACGTA
```

Found:

Aat2	<b>Acc65</b>	<b>Afe1</b>	<b>Age1</b>	<b>Ale1</b>	AlwN1	<b>Apa1</b>	ApaL1	<b>Ase1</b>	Avr2	<b>BamH1</b>	BciV1	<b>Bcl1</b>	BfrB1
BfuA1	Bgl1	<b>Bgl2</b>	<b>Blp1</b>	Bmr1	Bpm1	BpuE1	Bsa1	BsaB1	<b>BsaXa</b>	<b>BsaXb</b>	<b>BseR1</b>	BseY1	Bsg1
Bsm1	BspH1	<b>BspLU</b>	BspM1	BsrB1	<b>BsrD1</b>	BsrG1	<b>BssH2</b>	BssS1	BstAP	BstB1	BstE2	Bsu36	Bts1
<b>Clal</b>	Dra1	<b>Dra3</b>	Drd1	<b>Eag1</b>	Ear1	Eci1	Eco57	<b>EcoR1</b>	<b>Fsp1</b>	<b>Hind3</b>	<b>Hpa1</b>	Kas1	<b>Kpn1</b>
<b>Mfe1</b>	<b>Mlu1</b>	Msc1	Nae1	Nar1	Nco1	<b>Nde1</b>	NgoM4	<b>Nhe1</b>	Nsi1	<b>PflF1</b>	<b>PflM1</b>	Pml1	Psi1
<b>PspOM</b>	<b>Pst1</b>	Pvu2	<b>Rsr2</b>	<b>Sac1</b>	Sac2	<b>Sall1</b>	Sap1	<b>SexA1</b>	<b>Sfi1</b>	<b>SgrA1</b>	<b>Sma1</b>	<b>SnaB1</b>	Sph1
Ssp1	<b>Stu1</b>	<b>Xba1</b>	<b>Xho1</b>	<b>Xmn1</b>									

Unique:

<b>Acc65</b>	<b>Afe1</b>	<b>Age1</b>	<b>Ale1</b>	<b>Apa1</b>	<b>Ase1</b>	<b>BamH1</b>	<b>Bcl1</b>	<b>Bgl2</b>	<b>Blp1</b>	<b>BsaXa</b>	<b>BsaXb</b>	<b>BseR1</b>	<b>BspLU</b>
<b>BsrD1</b>	<b>BssH2</b>	<b>Clal</b>	<b>Dra3</b>	<b>Eag1</b>	<b>EcoR1</b>	<b>Fsp1</b>	<b>Hind3</b>	<b>Hpa1</b>	<b>Kpn1</b>	<b>Mfe1</b>	<b>Mlu1</b>	<b>Nde1</b>	<b>Nhe1</b>
<b>PflF1</b>	<b>PflM1</b>	<b>PspOM</b>	<b>Pst1</b>	<b>Rsr2</b>	<b>Sac1</b>	<b>Sall1</b>	<b>SexA1</b>	<b>Sfi1</b>	<b>SgrA1</b>	<b>Sma1</b>	<b>SnaB1</b>	<b>Stu1</b>	<b>Xba1</b>
<b>Xho1</b>	<b>Xmn1</b>												

Not found:

Aar1	Acl1	Afl2	Ahd1	Asc1	AsiS1	Baela	Baelb	Bbs1	BbvC1	Bcg1a	Bcg1b	BmgB1	Bpu10
BsiW1	BsmB1	BspE1	BstX1	BstZ1	_Chi	EcoK	EcoN1	EcoRV	ScFRT	Fse1	FspA1	I_Ceu	loxP
Not1	Nru1	Pac1	Pme1	PshA1	Pvu1	SanD1	Sbf1	Scal	Sgf1	Spe1	Srf1	Swal	PISce
Xcm1													

Excluded by site complexity:

Acc1	Ac11	Afl3	Alu1	Alw1	Apo1	Ava1	Ava2	Ban1	Ban2	Bbv1	BceA1	Bfa1	Bme15
BsaA1	BsaH1	BsaJ1	BsaW1	BseM2	BsiE1	BsiH1	Bsl1	BsmA1	BsmF1	Bsp12	BspCa	BspCb	Bsr1
BsrF1	BssK1	BstF5	BstN1	BstU1	BstY1	Btg1	Cac8	CviJ1	Dde1	Eae1	EcoO1	Fau1	Fnu4H
Fok1	Hae2	Hae3	Hga1	Hha1	Hinc2	Hinf1	HinP1	Hpa2	Hph1	Hpy99	Hpy1	Hpy3	HpyC3
HpyC4	HpyC5	Mae3	Mbo2	Mnl1	Mse1	Msl1	MspA1	Mwo1	Nci1	Nla3	Nla4	Nsp1	Ple1
PpuM1	Rsa1	Sau3A	Sau96	SfaN1	Sfc1	Sml1	Sty1	Taq1	Tat1	Tfi1	Tse1	Tsp45	Tsp50
TspR1													